

ROTARIANS ON THE INTERNET BREADBASKET

Monthly Newsletter of the Rotarians On The Internet

www.roti.org



From
ROTI Leadership Council
and Breadbasket Staff

Happy and Prosperous New Year to all!

The year did not end well for many...



No. 6 Vol.15
1 January 2012
ROTI Breadbasket
Since 1997

...but Rotary and service
partners were there.

Rotary and
ShelterBox working
together in the Philippines

Rotarians from Cagayan de Oro and Iligan, towns in Mindanao that were worst affected by Typhoon Washi on 16 December, have offered their assistance to the ShelterBox Response Team (SRT) on deployment in the Philippines to help put up ShelterBox tents.

Response team volunteers Abner Tayco (PH) and PDG Jesus Nicdao (PH), arrived in the country's second largest island on 20 December. They found many families in need of emergency shelter and lifesaving supplies, having had their homes swept away by the flash floods.

With nearly 1,000 people dead and over 280,000 displaced by the late-season tropical storm, Philippines President Benigno Aquino has declared a national calamity, according to the BBC: 'First priority is to relocate to areas that no longer pose a danger to them,' he told a meeting in Cagayan de Oro.

The ShelterBox team has been working with the local government to find suitable safe sites to pitch the ShelterBox tents. Abner and Jesus have also been demonstrating to volunteers from local Rotary clubs how to set up the ShelterBox tents.

'The assistance we have had from Rotary has been invaluable here,' said Jesus, himself a Rotarian and also Chairman and Founder of ShelterBox Philippines. 'It is possible for Abner and I to set up the tents ourselves but it would have been a much slower process. Now that we have shown the Rotarians how to do it, they will be able to help us set up camps rapidly. This will allow families who have lost everything to soon begin to rebuild their lives, offering them shelter, warmth and dignity - assets everyone should have so close to Christmas.'

Prepositioned ShelterBoxes in the Philippine city of Clark have enabled the charity's quick response and are being flown to the affected areas by the Philippine Air Force (PAF).

Coralie Farren
International Affiliates Coordinator
ShelterBox



12/23/20

WHAT'S

UP

RON NETHERCUTT
ROTI Chair 2007-2009

**Project ideas
Reflections
Rotary Information
Announcements**

**and
Collections
of Club,
District, Zone
Data
among
ROTI membership**

**Email
jazzprof@gmail.com**

ROTARIANS AT WORK ON CHRISTMAS

I want to dedicate my column "What's Up?" this month to the work being done by Rotarians in assisting those in the tragedy of tropical storm Sendong. There has been a wonderful joint effort by Rotarians, ShelterBox, and the Philippine Air Force in bringing aid to those in need.

Here first is a story from **PP Abner Tyco** written on Christmas Eve. Abs is also one of three certified ShelterBox Response Team members in the Philippines. He asked me to relay this message to our Governor who was recently involved in a serious automobile accident and underwent surgery for a broken hip and other medical concerns.

I hope everything is going well with you after your operation. DG Sam Fontanilla of D3870 conveys his warm wishes to you. The first shipment of 80 Shelterboxes has landed in CdO yesterday and delivered to Iligan City and temporary stored in the clubhouse of RC Iligan North. Another wave of shipment is waiting for the devastated province after Christmas. The city government has ordered by Jan 3 that all evacuation sites in schools have to be vacated in time for the opening of classes. That is where the dilemma lies, with about almost 14,000 families affected, 8 barangays (communities) has been declared unsafe for them to go back, the city will close down said areas in January.

Groceries and supermarket, small or big has stopped its bulk sales, they could no longer sustain the purchases for relief operations. All commerce is headed there to augment its supply that coincides the spending season for the holidays. Aid agencies are getting their supplies in other provinces like that of Cebu, Davao or Cotabato. Half of the city has no water. In areas that have been devastated, you can smell the stench of death, it's a hair raising experience. One gym is serving to house 1867 families or 4375 heads, with 4 toilets to use and very little water. The situation is unimaginable, after the loss, sufferings in the evacuation sites looms. You cannot even walk in between without stepping on someone's sleeping mat, if lucky enough to have one, or cardboard to sleep on.

Life is hard for this people during this holiday. Please pray for them to ease the inhumane suffering, it's really a heart breaking experience seeing those people.

- Abs Tayco ShelterBox Response Team (Cagayan de Oro City)

ShelterBox was founded by Tom Henderson OBE, a Rotarian and former Royal Navy search and rescue diver. He saw that the aid response to most disasters was in the form of food and medicine to help people survive the immediate aftermath. However little or no assistance was given in terms of proper shelter to help them through the first few days, weeks and months as they tried to rebuild their lives. ShelterBox was launched to fill that void.

In 2005 they sent out more than 22,000 boxes, almost 10 times the number sent out the previous three years. Not only did they send aid to victims of the Tsunami, but also able to help those who had lost their homes in Hurricane Katrina in the USA and the massive earthquake that hit the Kashmir region of Pakistan.

Henderson said, "We have continued to build on our Tsunami experience, helping as many people as we can, and as quickly as we can when disaster strikes. ShelterBox has now worked on every continent, responding to earthquakes, tsunamis, floods, typhoons, hurricanes, volcanoes and conflicts.



PAF unloading sheltex boxes from C130; ShelterBox Phils PDG Jess Nicdao at evacuation site

CHAIR'S REPORT

Steve Sokol, 2011-13

As we crest over the Winter solstice, there are Festivals in most of the belief systems of the world. I do not know the correct salute to most of these. However, allow me to recognize as many as I know, and apologize to any I miss. [please note that some are not seasonal in nature, but it might shock you by some that are.

- Christians have Christmas
- Jews have Chanukah
- Sikhs have Gurburabs (period between Guru Nanak Jayanthi and Guru Gobind Singh Jayanti)
- Asatrus have the twelve days between Mother Night and Yule
- Buddhist have Rohatsu
- Wiccans have Yule
- Jains have Gyan Panchami
- Hindi have Makar Sankranti
- Muslims have the 40 days between Ashura and Arbaeen
- Bahai have the Feast of Sharaf
- Zoroastrians have Zartosht no-diso, and
- Though not a religion, Americans of African descent have Kwansaa

I hope I have not made an error that insults anyone. I made this effort both as a gesture of goodwill and to show the full worldliness of ROTI.

The lists are remaining very quiet. There is a lot of activity in this world we share, so I expect it to remain quiet for the rest of the year. I hope the time of peace and love in most of these festivals will rejuvenate the group and we can get back to some interesting conversation. Do not forget that the true value of ROTI is the ability to exchange questions, thoughts and ideas with Rotarian all over the world.

Part of this exchange should be what ROTI can do for you. If you are trying to increase membership, just ask the list what their respective clubs are doing. Would you like to make your change-over more meaningful? Chat about what other clubs are doing. My club is looking at putting on a four course golf tournament. It is uncommon, so we are having trouble gathering information and suggestions. Asking about it on the lists would bring some possible experiences and lots of interest in the concept. Consider ROTI as your Rotary encyclopedia.

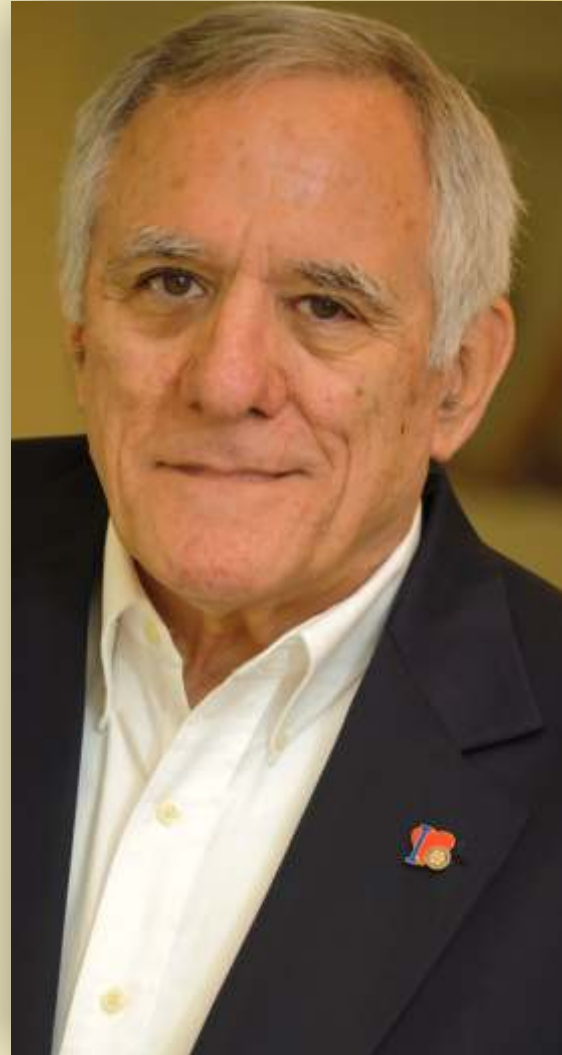
What can we do to make ROTI more valuable to you? This is your organization – tell us how we can become more relevant to your needs.

Finally, do you have projects that you would like covered in the BreabBasket? Tris would love to help you get them in and you have potential exposure to hundreds of thousands of Rotarians and others. Can you help others or can they help you? ROTI is the mechanism by which you and your club can contribute to the value of ROTI.

I hope that everyone experiences a festival season full of peace and joy if that is the goal, or appropriate redemption if that is the meaning of your seasonal holiday.

Keep ROTI meaningful!!

Steve Sokol
Rotary Club of Seneca, South Carolina, USA
District 7750



**What can we do
to make ROTI
more valuable
to you?
This is your
organization
- tell us how we can
become more
relevant
to your needs.**

NEW YEAR 2012 RESOLUTIONS

A New Year resolution is a [commitment](#) that an individual makes to one or more lasting personal goals, projects, or the reforming of a [habit](#). According to Gretchen Rubin (author of best-seller "The Happiness Project"): "You hit a goal, you achieve a goal. You keep a resolution".

This [lifestyle](#) change is generally interpreted as advantageous. A New Years Resolution is generally a goal someone sets out to accomplish in the coming year. Some examples include resolutions to donate to the [poor](#) more often, to become more [assertive](#), or to become more [environmentally responsible](#). A key element to a New Years Resolution that sets it apart from other resolutions is that it is made in anticipation of the New Year, and new beginnings.

There are religious parallels to this secular tradition. During Judaism's New Year, [Rosh Hashanah](#), through the [High Holidays](#) and culminating in [Yom Kippur](#) (the Day of Atonement), one is to reflect upon one's wrongdoings over the year and both seek and offer forgiveness. People may act similarly during the [Christian](#) fasting period of [Lent](#), though the motive behind this holiday is more of sacrifice than of responsibility. The concept, regardless of creed, is to reflect upon [self-improvement](#) annually.

Popular goals include resolutions to:

- Improve health: lose [weight](#)
 - [exercise](#) more, [eat better](#)
 - drink less [alcohol](#)
 - quit [smoking](#)
 - stop biting nails
 - Improve [finances](#), [get out of debt](#)
 - save money
 - Improve career
 - get a better [job](#)
 - Improve [education](#)
 - Improve grades, get a better education, learn something new (such as a [foreign language](#)
 - or [music](#)), [study often](#)
 - Improve self: become more organized, reduce [stress](#)
 - be less [grumpy](#)
 - [manage time](#)
 - be more independent, perhaps watch less television, play less sitting-down video games
 - Take a trip
- [Volunteer](#)
- to help others, practice life skills, use civic virtue, give to charity

For the year 2012, the top 5 resolutions, as identified by a SlideShare survey are:






- Be financially-savvy
- Read at least one book per month
- Eat properly
- Get enough sleep
- Keep a journal of awesome moments


Success rate

Recent research shows that while 52% of participants in a resolution study were confident of success with their goals, only 12% actually achieved their goals. A separate study in 2007 by Richard Wiseman from the University of Bristol showed that 78% of those who set New Year resolutions fail, and those who succeed have 5 traits in common. Men achieved their goal 22% more often when they engaged in [goal setting](#), (a system where small measurable goals are being set; such as, a pound a week, instead of saying "lose weight"), while women succeeded 10% more when they made their goals public and got support from their friends.

A RESOLVE

For every Morning of the New Year

I will this day try to live a simple 
sincere and serene life 
repelling promptly every thought of discontent, anxiety, discouragement, impurity and self-seeking 
cultivating cheerfulness 
magnanimity, charity, and the habit of holy silence 
exercising economy in expenditure, carefulness in conver-

sation, diligence in appointed service, fidelity to every trust and a child-like trust in God 

From a Calendar by Bishop John H. Vincent



Best wishes to you!

May your Rotary meetings be well attended

May your club bickering remain polite

May your SAR reports be completed on time

May your membership grow, but with

servicing Rotarians

May your attendance be 100% (with make-ups of course)

May your projects be funded with TRF Grants

May those you ask to join say YES

May your officers all do their jobs efficiently

May the MOP be your guiding light in all things RI related

May your Club BOD act in good faith for all the members

May your members all pay their dues on time

May ALL your club members donate what they can to TRF

And lastly

May you wear your Rotary pin at days other than your meetings AND

May you meet wonderful Rotary friends in your travels

Ron Nethercutt, ROTI Chair 07-09

District Rotary Information Chair, RC Mabalacat D 3790, Angeles City, Philippines. www.jazzprof.com



ROTIAN OF THE MONTH

John Glassford became a member of ROTI in 2004. He was born in Kenya, on his father's coffee farm, and lived there for his first twenty years. He migrated to Australia by way of the University of Edinburgh with his first wife and two sons and became a builder specialising in the use of straw, a material readily available, and often treated as waste.

John is a member, and currently International Services Director, of the Rotary club of Coolamon, in the Riverina District of Southern New South Wales, Australia. -a grain growing area where there is plenty of straw.

In 2003 John was approached by a fellow builder from South Africa regarding the possibility of erecting straw houses for a lady who mothers orphaned children. Over a hundred of them. From this simple request a new calling emerged – aid to the AIDS-afflicted. Those who have followed his recent contributions to the ROTI list about his just-completed climb in Uganda's "Mountains of the Moon" will affirm the depth of his commitment.

John approached many organisations for help. Salvation Army, USAid, Dept of Foreign Affairs (Australia), the Catholic Church, The South African Government, the Mandella Foundation, to name a few. Only Rotary became interested and offered help. He seized the offer and jumped in with both feet – joining Rotarians for Fighting Aids (he is now a Director), and leading a move to partner with the RC of Hout Bay, in South Africa. His dedication to the fight against AIDS is too great to chronicle here – instead the reader is referred to:

-Coolamon Rotary Club site

<http://www.coolamonrotary.com/index.html>

-Road MAPS to Africa

http://club.coolamonrotary.com/?page_id=139

-Road MAPS to Africa – initial report to ROTI

<http://www.roti.org/newsold/2004-5/04jul/r307.htm>

-Road MAPS to Africa – second report to ROTI

<http://www.roti.org/newsold/2004-5/05jun/ra06.htm>

- The climb of Mt. Kilimanjaro to raise funds to combat AIDS

<http://www.coolamonrotary.com/kili/>

-The climb of Mount Margherita for World AIDS Day December 1st, 2011.

<http://www.mountainsofthemoon.org/>



Resting after a stiff climb

Each month, a special Rotarian is selected by ROTI, in recognition of his/her commitment and dedication to Rotary service. This month, ROTI is pleased to honor ...

JOHN GLASSFORD

(The Straw Wolf)

Thanks, John, for all you do for AIDS victims, Rotary, and ROTI!

A Chip Ross Production



ROTians John B. John G. & Todd gathered at the Lindley residence in 2009

Mountains of the Moon A COOLAMON ROTARY CLUB INITIATIVE



"We have returned home from one heck of an adventure and I will write up several stories here over the Christmas break. It was without doubt the toughest thing that we have ever done. Two in our team of seven made it to the summit of Mount Margherita: Moses Kashumba from Tanzania and Fred Madden from Bathurst...."

- John Glassford

'Mountains of the Moon'

is a World AIDS Day mountain climb led by Rotarians to help the orphans and vulnerable children in Africa.

RFFA raises awareness and funds for this worthwhile project

'Mountains of the Moon'
is a Coolamon Rotary Club
initiative
supported by
**Rotarians For Fighting AIDS
(RFFA).**

www.rffa.org





In December's dark, the frigid air weaves tapestries of hoary frost everywhere. It is music for the eyes of Northerners. Like a Bernstein Adagio, the insulated, deep snow silence brings us visual harmony and inner calm. Southern warmlanders may not know that snow and ice crystals are often lifted, as if from a frigid pallet, and slowly disappear directly into the brush of passing cold dry breezes. Later the gentle arctic air paints them again as fragile wafted sculptures in six-pointed drapery sparkling from branches, dried stalks or barren surfaces. When undisturbed in windless cold, the rhombus-like stones of the hoary jeweler bedeck our world with the winking trinkets of solstice night. Twinkling from their impermanence, they beckon, "Come. Stand with us in the darkness and cast the moon's glow into the darkness."

We cannot resist. Like molecules in the waters of a great sea, the moon moves us in the great tides of winter. We layer our clothing for warmth against the chill and flood forth so that we, too, can become sequins in the night. Flooding our winter beach, our feet punching disturbance in virgin snow, blowing steam as we go, we find a quiet place between snow-laden trees, and stand rapt together with the flirtatious crystals. We, too, become gems of the dark. As the full, golden orb rises over eastern mountains, we wink with the stars in the arctic sky. Nothing is spoken. The moon's glow sparkles briefly, anonymously from us, perhaps seen, perhaps not. Up to our knees in crystalline powder, we know the night's glow finds us to blink light and aurora into the dim chill. In the snow-laden hush, disturbed only by our inhaling cold and exhaling heat, the arctic artist makes of us illumination on a transient canvas, painting us in chilled borealis memories on empty branches and vacant surfaces. Our hair, mustaches, eyebrows and eyelashes are frosted white and we become one with our reflective companions. Our winking heat, light and spectrums reflect the arcing moon, and silently we bow, "Come. Stand with us in the night and cast your glow into the darkness."

We recall our wanderings of summers past, our journeys in warmer times, and companions met and left along the way. It is said that when we meet, pass and leave others we must "be kind, for everyone is fighting a great battle." Do those we pass recall this wisdom in meeting us? Perhaps they do, or don't. Nevertheless, we shoulder our burdens. We take up our battles. And, in our virtue, still we offer aid to those who also shoulder and fight in solitude. For some, perhaps even we ourselves, the winter and night have suns and moons of their own. Anytime of year, darkness may come. Whatever the season, when we approach companions, friends, families and fellows on our way, those in the solstice of their winter quietly engaged in invisible battles, can we think of ourselves as their moons at night? What tidal flood might we bring during their ebb? What light or heat in their darkness? What warm twinkling smile from the cold? What might they bring us?

During solstice solace, may we rest and momentarily cease our wandering cravings and yearnings. May we find comfort in the reward of the year's harvest, surrender ourselves to the respite of sleep and night, and let the sufferings, hardships or pains we have witnessed fall from us. May we renew our strength, compassion and commitments to those who quietly battle and struggle. May we also gracefully accept assistance ourselves for those battles and struggles that rage within and around us.

It is in this spirit that we stand in the snow, breathing our warmth against the cold, winking into the night of those whose solstice has no moon. We listen and soundlessly we hear, "Come. Stand together during the solstice night, whenever it may be, and cast your glow into the darkness." Someone, somewhere, silently and heroically, is fighting a great battle in the night.

Renewal

Jon Deisher, PP
Anchorage Rotary/D5010

The NEW GLOBAL DONOR FORM

CONTRIBUTION FORM THE ROTARY FOUNDATION

Contributions can also be made at www.rotary.org/contribute.

1. NUMBER OF CONTRIBUTIONS

Type of Donor (Check One) Individual Rotary Club Business/Institution District Business

Charitable organization/Foundation Other

Name _____ Donor ID number _____

Club name _____ Club number _____ District number _____

Billing Address _____

City _____ State/Prov _____

Country _____ Postal code _____

Daytime phone _____ E-mail address _____

2. DESIGNATION OF FUNDS (Check One)

Annual Fund — STAFF Permanent Fund — World Fund Permanent Fund — Rotary Peace Grants

Individual Permanent Fund — SHARER Approved Foundation grant _____ (number standard)

3. CONTRIBUTOR'S DETAILS

Amount of contribution _____ Currency _____

Type of Payment (Check one)

Cash Visa Mastercard American Express Debit Card P/B

Make this recurring contribution: Monthly Quarterly Annually (Select month)

Credit card number _____ Expiration Date _____ (MM/YY)

Name as it appears on credit card _____ Signature _____

Check Payable to "The Rotary Foundation" Check number _____

Wire transfer Donor Initials _____

4. ADDITIONAL INFORMATION — RECIPIENT'S DETAILS ONLY

Presentation Date _____ Please do not send recognition Please keep my gift receipt

Send recognition to: (Check one, if left blank, recognition will be sent to club president)

District Club president District governor Other, record information below

Name _____ Address _____

City/Town/Village _____ Country/Postal code _____

5. INDIVIDUAL COMPLETING THIS FORM (IF OTHER THAN AUTHORIZED SIGNER)

Name _____ Daytime phone _____

E-mail _____ Date _____

Please send your completed form only once. Contributions can also be made at www.rotary.org/contribute.

Mail: The Rotary Foundation, 4400 Coliseum Drive, Chicago, IL 60630 USA. (Canada: The Rotary Foundation (Canada), Box 9850, St. Paul, MN 55116 USA. (United Kingdom: The Rotary Foundation, Box 1467, St. John's Wood, London, W8 7NF UK. For more information, or to make a contribution, please call 1-800-801-2121 (1-800-801-2121)).

This card requires neither a PIN, nor a signature that appears on the back of your credit or debit card. It is a paper document as the first of its kind (originally approved by the donor of your credit card number).

© International Brotherhood of Magicians (IBM) 2011. All rights reserved. IBM, the IBM logo, and the IBM name are trademarks of International Business Machines Corporation. IBM, the IBM logo, and the IBM name are registered trademarks of International Business Machines Corporation in the United States and other countries.

PAUL HARRIS FELLOW RECOGNITION TRANSFER REQUEST FORM

Please send your completed form only once. If you have questions regarding recognition or contributions to The Rotary Foundation, please contact the Contact Center at 800-801-2121 (1-800-801-2121) or email contactcenter@rotary.org, contact the Rotary office that serves your area. Contributions can be made at www.rotary.org/contribute.

1. RECIPIENT INFORMATION

Transfer Recognition Points to _____

Name _____ Daytime phone number _____

Club name _____ Club number _____ District number _____

Address _____

City _____ State/Prov _____

Country _____ Postal code _____

Daytime phone # _____ E-mail address _____

2. TRANSFER INFORMATION

Foundation Recognition Points amount _____ (Maximum of 100 points)

Transferring Recognition Points from:

Individual ID number _____ Club number _____ District number _____

AUTHORIZED SIGNATURE (required) _____

Date _____

3. SHIPPING INFORMATION — RECIPIENT'S DETAILS ONLY

Presentation Date _____ Please do not send recognition

Send recognition to: (Check one, if left blank, recognition will be sent to club president)

District Club officer District officer Other, record information below

Name _____ Address _____

City/Town/Village _____ Country/Postal code _____

4. INDIVIDUAL COMPLETING THIS FORM (IF OTHER THAN AUTHORIZED SIGNER)

Name _____ Daytime phone _____

Total _____ Date _____

UNITED STATES The Rotary Foundation 3400 Coliseum Drive Chicago, IL 60630 USA	EUROPE OFFICE Rotary International Box Supper 38 2100-00 Chicago, IL 60630 USA	ASIA OFFICE Rotary International 45 East Wacker Drive Chicago, IL 60601 USA	AFRICA OFFICE Rotary International 1000 North Dearborn Chicago, IL 60610 USA	AMERICAS OFFICE Rotary International 1000 North Dearborn Chicago, IL 60610 USA	EUROPE OFFICE Rotary International Box Supper 38 2100-00 Chicago, IL 60630 USA	AFRICA OFFICE Rotary International 1000 North Dearborn Chicago, IL 60610 USA	AMERICAS OFFICE Rotary International 1000 North Dearborn Chicago, IL 60610 USA
---	---	---	--	--	---	--	--

For the life of me, I do not understand the problem people are having with the new Global Donor Forms for the TRF. Basically, the new form takes a confusing two column form and makes it a clear two page (front and back) form.

The only thing I had to stop and think about was the use of "Transfer Recognition Points to:" language when indicating the identity of the person to be recognized as a PHF. Those word do, in fact, describe what happens when someone other than the donor is named a PHF but I, at least, did not previously think of the designation of a PHF in terms of a transfer of recognition points.

The only place I see that a signature is required is on a credit card transaction. Otherwise, the form can be filled in on-line.

Frankly, I think the form is a clear improvement over the confusing two column "old" form and, I suspect, will result in many more forms being transferred electronically.

- Dan Moers, D7780

While labeled as "one two-sided form", they are really the two separate forms packaged in one file. Look on the second page for the signature requirement for the points transfer. With a nice example, the previous form was trivial to use. This change is going to confuse people because now we're doing a single donation with NO beneficiary. Then, filling out the recognition transfer form. These are two separate forms. Why they're packaged in the same file is beyond me.

- James Shields, Rotary Club of Tacloban, District 3860, Philippines

Not sure what you mean by "beneficiary". The recognition points accrue to the "donor" and, all else being equal, the donor (if an individual) will be named a Paul Harris Fellow or beyond. That part is all on one form, including provisions to be completed if the donor wants the PHF recognition.

The back side of the form only applies if the donor wishes to "transfer" his/her recognition points and name someone else a PHF or credit the points to someone else. Frankly, I have always felt the old one page, two column donor/recognition form was confusing on that score but the new second page makes the transfer of points easy (and I note the "transfer" form is an independent form that can be filed separately from the "donor" form).

I understand that, in the past, problems occurred when club or district officers would direct TRF to "transfer" points. I know of one instance where a sitting DG directed TRF to transfer to his personal account all the point accruing during his year and he was thus made a "major donor." At least now, the individual or club/district officer must sign a form to transfer points and it might stop some of the improper transfers.

I am sure no one wants to make donations to the TRF more difficult or complicate our lives. To me the new forms are logical, easy to use and much clearer than the previous donor/recognition forms.

- Dan Mooers, D7780

In our district 3230 there is a constant race by Governors who wish to surpass the predecessor to the TRF so much so that there is "pressure" felt down to the President/Members. In our district, during the PETS the "targets" for TRF contribution club wise is set and there is follow up as well as reviews. Of course not all clubs in all years do achieve the "numbers" but the heat is felt.

How does it happen in your districts?

- Rtn G N Sivaramakrishna, RI District 3230, Rotary Club of Madras North, Chennai, India
President 2009-10, Rotary Club of Madras North, Chennai, India

I understand that. I've been in Rotary since early 2008. I'm a dedicated Rotarian, serving my second term as Secretary. I'm currently a PHF+3. Doing the math, one can see that I've given more than \$100 per year (I like helping to fight Polio). If the DG came down with a lot of pressure to give more, I'm fairly certain that I'd give \$100 each year. I donate because it is the right thing to do. Not to set records.

- James Shields, Rotary Club of Tacloban (District 3860, Philippines)

peter.sotheran@tiscali.co.uk wrote:

In my 26 years in Rotary, I have never been aware of that sort of pressure in my club or District. In general, we take a non-competitive attitude to our Rotary activities. Even the schedule of club attendance rates is published in alphabetical order, rather than ranked from the best down to the worst. We do what we can to serve our communities, locally and internationally, to the best of our abilities without giving any special thought to the 'rewards' of a certificate or an accolade. That surely is in the best spirit of our motto - 'service before self'. We certainly do not seek to compete with our neighbouring clubs in TRF fund raising or any other matter. In fact, I believe that the DG or District is wrong to set financial targets for TRF. There is a mindset that switches off once the target is reached. If it was left open ended, we might well raise more, according to our abilities. As it happens my club does always reach and often exceed the expectations or requirements of RI.

Stephen M Coleman wrote:

In our district 22 of 63 clubs have not made a contribution to TRF general fund this year. I don't think I'm the only one who feels lost connection, I'm just the one who voices it. I don't think FV, even beyond the GSE issue, has curried favor for TRF in the eyes of many club level Rotarians in our district.

How does an individual Rotarian show his support or disappointment in the direction of TRF? Through the RI Board? I don't recall ever voting for an RI board member. I don't recall ever voting for a TRF trustee. The only vote an individual Rotarian has is with his or her dollars.

Steve:

It seems to me that there is a serious leadership problem in your district. Perhaps there lies the problem..

Of course you, individually, have never cast a ballot for an RI Director. That is because you, as an individual, are not the member of Rotary International. But your club, collectively, has cast that vote, either directly or indirectly. Your club, at the very least, had the opportunity to cast a ballot for a member of the nominating committee for RI Director. Perhaps, like many clubs, it decided to let that opportunity pass. And, of course, if there was a contest following the nominating committee process, your club would have had an opportunity to cast a ballot there. It is true that the governance of The Rotary Foundation does not provide for direct election of Foundation trustees. I am not aware of any large charitable organization that does have direct election by charitable donors. You joined a club, as is the case of all Rotary clubs, that is affiliated with an international organization which has an established set of governance documents. Most Rotarians are satisfied with that system and the vast majority of Rotarians believe our Foundation is well managed.

It is very unfortunate that about a 1/3 of the clubs in your district have not contributed to the Foundation this year. I hope the lack of contributions is not part of a boycott you seem to be advocating. Boycotting by withholding contributions simply means that there will be fewer clubs in the world who can undertake programs to feed hungry children, provide scholarships to worthy students, construct water treatment and other sanitation facilities, or undertake other projects to do good in the world. Your anger over a decision of the Foundation Trustees to revamp an educational travel program into a humanitarian travel program might result in serious damage to some very great work being undertaken by thousands of dedicated people.

But you failed to respond to my question: What changes would you make to the Foundation governance documents to achieve the changes in leadership you seem to oppose? How can we

RACE for SUPREMACY in TRF CONTRIBUTIONS



accept what you say is wrong with Foundation governance if you cannot tell how you would make it right. Is it wrong only because the Trustees voted to alter the program you wanted to see continue unchanged?

- Dan Mooers, D7780

Dan: Here ya go:

Amend the following section of the TRF bylaws:

Section 3.2 - Number, Appointment, and Term. The number of trustees shall be fifteen (15). The trustees shall be appointed by the president of the corporate member, with the concurrence of the directors of the corporate member.

Amend to read:

Section 3.2 - Number, Appointment, and Term. The number of trustees shall be fifteen (15). The trustees shall be appointed by the corporate member through such procedure as the corporate member shall establish through its bylaws.

Make that change and the districts and clubs could at least send a proposed bylaw enactment to the COL establishing how TRF trustees are selected.

I have to take issue with your view of our district leadership. I think our leadership is great and with the PDGs, our current DG and the DGE and DGN coming up I think we are set for a run of outstanding DGs that I haven't seen in my 21 years as a Rotarian in this district. We now have a committee working on, among other things, how to make the district leadership more responsive to the membership and involve more of the membership as potential DG candidates. I for one think that is pretty "cutting edge." Your equating the quality of our district's leadership to their ability to sell TRF to all the clubs seems to me to be an analysis that would blame buggywhip salesmen for the demise of the buggy whip industry.

I am continually amazed that no matter how hard one tries to make a criticism of elements of Rotary a comment on the system to avoid making it personal and how hard one tries to contain those criticisms to Rotarian only venues such as this discussion group there are those who take it as a personal affront. If we can't discuss our frustrations with as well as our support for the organization then those criticisms are left to ferment until they become toxic.

I'll match my passion for Rotary with anyone's. But for that passion I would have walked away once I understood the effect of FV. I can assure you that would have been a helluva lot easier. and cheaper too.

Gotta go, there are children to be starved. I think I'll do that by picking up the backpacks on Thursday that we send home with needy school kids during the weekends when school lunches are not available to them. By the way, those backpacks are collected and distributed through our school by my wife who obviously shares my willingness to starve children. Probably should hit the "After Christmas Sales," I bet there will some good deals on canned goods.

- Steve C

Steve:

It's good that you are thinking about improvement to the governance of the Foundation and I compliment you on your effort to save GSE. I conveyed that to you some time ago in our private correspondence and I always encourage Rotarians to embrace the COL as a method of change.

However, the change you propose in the Foundation bylaws is unnecessary. The RI constitution already provides that the Foundation shall be operated in accordance with the RI bylaws, and the RI bylaws already provide for the procedure for the selection of Trustees. Those provisions in the RI bylaws can be changed at any COL and, if fact, have been changed frequently in recent years. Currently there is even a conflict between the RI bylaws and the Foundation bylaws as to the officer of Rotary who appoints Trustees. As you would expect, it is the RI bylaws provision which is followed, not the Foundation bylaws.

Let me add that my comment about your district's leadership was inappropriate and I should not have made that comment. My fingers were simply too quick on the trigger. My concern, obviously, is with the large percentage of clubs which have not contributed to the Foundation. >>>>

I consider that a terrible loss for your district because a large percentage of the donated money comes back, in one way or another, to benefit your district's clubs.

I am pleased to hear about your club's backpack program. My club recently received a Foundation-sponsored "district simplified grant" to expand its school backpack program. I happened to be at the school waiting for an Interact meeting two weeks ago when a member of my club delivered the backpacks to that school. The program really does help deserving children in our communities - and generally those kids are hidden from public view and only known to school officials. Keep up the good work, and my compliments to your wife for her involvement.

Best wishes for the New Year.

- Dan Mooers, D7780

Although I feel you were a bit too harsh on Steve, I do agree with you that disagreement over the Trustees' decision concerning GSE should not be a reason to stop supporting TRF.

I do agree with Steve that we should continue to fight to try to save GSE. However, there are two things that I would not do in the fight: 1. stop being a Rotarian and 2. stop supporting The Rotary Foundation. I repeat that those are things that I would NOT do, nor threaten to do in the struggle to save Group Study Exchange.

The Rotary Foundation continues to be one the best, if not the best charities in the world. We, as Rotarians, even in the Future Visions plan, continue to have a strong voice in how those funds are spent to do good in the world.

- Eugene L. Beil, Centennial PDG 6950; Rotary Club of Hudson, FL

Gene: I am not sure in what way I was too harsh, but I accept that sometimes my words do not always result in a reader's mind the manner in which I wanted to convey them. As you, I also think Steve should continue fighting to save GSE and I have given his some idea to use, Having done that, it bothers me, to no end, that Steve continues to trash the leadership and the decision-making process. Such attacks do not help his cause, and his cause is destroyed if he continues suggesting that club members stop supporting the Rotary Foundation program. Some how, and I am not sure why, Steve misses the point that even Foundation requires the endorsement in some manner, to carry it out. Only Rotary clubs and districts may apply for grants and the get the grant there must be another rotary club or district on the other end. Only Rotary clubs can propose scholars. When he says there is not connection between the Foundation and the clubs, it simply is not true.

Perhaps we can have a better discuss on the subject with correct facts and a clearer understanding.

Happy New Year.

- Dan Moers

Rotary describes itself as a 'service organization' and I guess we are all comfortable with that. It is our service to others that creates and maintains our world-wide 'good name'. We do need funds for many of our activities but we are primarily a SERVICE group and fund-raising must be secondary to our service objectives.

It is very seductive to look at last year's fund raising and attempt to do better this year. I know, I have been there myself in a non-Rty activity. But in the world of Rotary, it is better to raise what you need for the tasks in hand. It is a form of greed to take more than you need, often to the detriment of other fund raisers in a local community.

Here in my corner of north-east England, we have seen two major fund raising organisations scrape the barrel clean of cash to the detriment of a host of other smaller local charitable groups. All credit to the large groups for being very professional and successful in their campaigns. But their efforts have left scores of smaller local groups struggling in their wake.

I would not like to see a Rotary fund raising campaign have that effect. It's not fair; it does not build friendships; it is not beneficial to all.

Happy New Year everyone

- Peter, D1030

Reading a description or having an explanation of how The Rotary Foundation works is always difficult to understand and worst, to remember, and I think this negatively affects what Rotarians think, say, and do about making a contribution to the Foundation. I have seen graphical presentations using pipes, valves, and tanks to show where the money comes from, what happens to it, and where it goes, and all it did was to make my understanding more cloudy at best. I also noticed that understanding the mechanics of the Foundation does not necessarily encourage a Rotarian to contribute, so maybe we need to spend more time and resources explaining why it is good and fulfilling to help others in communities locally and in the world.

Yes, we too often talk about our goals in giving and doing to justify the why of giving and doing, and this doesn't work. Not against using indicators of success, but definitely against meaningless indicators of success. I remember reading something a long time ago where the state's employment office measured the success of their operations by how many unemployed people they registered, not how many jobs they found for the unemployed. I think we are all aware of stats and indicators being misused to measure "success."

- Alan Okinaka, RC of Hilo Bay, Hilo, Hawaii

Each Rotary District Governor has to turn in TRF goal sheets and a report recounting those recaps the percentage of clubs with goals. The presidents are encouraged to submit goal forms and that usually happens at PETS both for the convenience of having all of them together and to find a time before the expected submission deadline prior to the start of the Rotary year.

During my year as Governor Elect, I promoted the development of goals, not to reach a higher number than my predecessors, but instead to provide club presidents with an organizational method to achieve good things during their year. Rotarians enjoy supporting the wonderful educational and humanitarian programs of the Rotary Foundation, but they can easily forget to provide financial support if the club president does not talk about the subject. As District Governors our largest role is supporting and strengthening the clubs. We do that by helping the presidents learn to organize and plan in Rotary as they would in their professions. The club president needs to have a vision of where they will lead the club for a year. That vision, though, could be nothing more than a dream if they do not develop a strategy and tactics with measurable goals. The TRF goals are just one piece of that strategy. The TRF goal that I reported as DGE was just the sum of the goals submitted by my presidents, and thanks to their efforts, not to pressure from me, they exceeded their own goals by about \$50,000 USD. That extra money will support a lot of excellent projects after three years.

- Don Murphy, Rotary Club of Salida, CA, USA, Past District Governor 10-11, Rotary District 5220

Agree with Peter, contribution to TRF is voluntaryas DG 10-11 last year I just emphasized the \$100 EREY contribution recommendation by TRF and requested the Presidents & the district TRF committee to let Rotarians be aware or rather remind them at every opportunity of what TRF does, how their contributions are used, the achievements of the 'End Polio Now' campaign but not ASK anyone by name to contribute. Of course we explained PHSM, PHF, Bequest Society, Major Donor recognitions etc. . This worked we had a 40% higher contribution than the earlier high, were the Zone leaders in Per Capita contributions to TRF, doubled our major donors from 12 to 24 and nearly 300 PHF and over 35 members of the Paul Harris Society who agreed to contribute \$1000 every year and over 200 members of the EREY society.

- Madhukar Malhotra, Member, Rotary Club of Chandigarh, Past District Governor 2010-11, Rotary International District 3080

I am from RID 2980 and I have been a Rotarian for more than 25 years.

The story is the same in every Rotary District in India. This year's Governor aims at surpassing all his predecessors as far as TRF Contribution, Membership growth, and External extension are concerned. The moment a club exceeds its membership strength by 40, the DG encourages the club, with such tempting ideas as to "Why not start another Club etc.

Forget about sustainability etc. That is all in paper only.

- Rtn Col Sabapathi, RC Hosur Midtown

In "meu" / my Distrito, there, also, is an unofficial competition of sorts for the District to surpass the previous years' donations to TRF - with the DG prompting that competition so he / she looks good !?!?!? Personally, I do not subscribe to that !!

During the year I served as Distrito Governador, I AM proud to say that I never once looked to see how much any one club or any individual gave during that particular year !! We had one DG who was checking constantly all year long before and after his official visits and would let us know how we were doing... Again, I do not subscribe to that !!

I set a goal and reminded people all year long that I would NOT be checking because my attitude is: "Personal giving" is "personal giving" and I have been told by a few that more clubs gave during the year I served as DG, and, therefore total giving to TRF had increased ! Maybe I should thank the DG prior to me who put SUCH a "push" on this ?????

- Jay Dzurilla, RD 6630, NE Ohio, USA, DG 2006-07

2003-04 Jonathan B. Majiyagbe (general law practice, Rotary Club of Kano, Nigeria. Rotary vision: That Rotarians would reach out in fellowship and service to LEND A HAND whenever it is needed.

"Whether we are reaching out to those in our own clubs, or reaching halfway across the world, personal involvement has always been fundamental to Rotarian service. When we LEND A HAND, we focus on this personal involvement and we celebrate our shared humanity. Working together, ready and willing to help our brothers and sisters in need, one hand can become many and there is no limit to what the helping hands of Rotary can accomplish."

-2003 International Assembly, Anaheim, California, USA

My problem with these comments is simply to ask, who above the district level is causing such severe problems that you would consider taking your club out of Rotary? Are we talking policy makers such as the RI Board or Foundation Trustees, or are we talking staff? If staff, please enlighten us what kinds of problems you are experiencing, are they repeat problems with the same staff person, are they multiple kinds of problems with various staff? To say "RI people past the district level" really tells us nothing.

- Bob Collins, > RC of Council Bluffs Centennial (a 6 year old club) District 5650, IA/NE USA

When I joined Rotary back in 2000, was told to contribute to the TRF and become a PHF. By doing so, I get a PHF pin, a certificate and a medallion, which I can wear proudly at all times.

It meant that I had money and I can claim bragging rights. If not, I am considered a second class poor member.

What was explained to me is the giving part and not the other part of TRF.

The part that we take from the TRF, through projects and other RI programs.

If we do not participate, we can not take and should not complain. Nothing is handed to us in a silver platter.

Each year, the District Governor wanted to outdo the previous Governor in total TRF contribution. That is a good thing if it is done with the right intention. The fund raised are meant to fund projects that will allow us Rotarians to do good.

If we take away the personal egos and prides, and explain to all why we are supporting to TRF, I believe we will get more from the 1.25 million or so Rotarians.

There may be less major donors, but more contributing Rotarians yearly. The total amount yearly I believe will be bigger and more important sustainable. Do we expect major donors to do it every year? We certainly can expect every Rotarian giving \$100 a year.

I believe the EREY program is very good. From an unrealistic goal of doubling memberships, which the Every Rotarian Every Year was original conceived for every Rotarian to bring in 1 new member every year, it is now used for TRF contributions asking each club to have a per capita of \$100 with every active member contributing something (I guess it meant at least \$1)

It is in the right direction to promote public image of what Rotary is doing in terms of projects and programs. Hope it would not be misunderstood that Rotarians are bragging.

Let us focus on what the beneficiaries are getting from us, not dole outs, but for them to help themselves and eventually help others.

By the way, the past few years RI presidents all advocated a net increase of 1 member per club, instead of a huge increase in 1 year and huge loss of members the following year. We also have to be strict and not let anyone become a Rotarian. It takes a few to ruin the good name Rotary had built over the past 1100+ years.

The idea that if we have more members, we will have more donors to the TRF needs to be clarified. We need more members who understand why he is a Rotarian and not those who sign up without really knowing what they have sign up for.

When you give money, you are a donor, at best a philanthropist. When you give your time and talent, you are a worker and at best a servant leader. When you give all (Time, Treasures, and Talent), then call yourself a Rotarian.

Just my 2 cents worth. Happy New Year to all.

- PP Albert Ang, D3800, Rotary Club of Mandaluyong

Anthony J. Lamanna, P.E., Ph.D. wrote:

Wow, it hurts being called a "servant leader:"

"When you give money, you are a donor, at best a philanthropist. When you give your time and talent, you are a worker and at best a servant leader. When you give all (Time, Treasures, and Talent), then call yourself a Rotarian."

Nowhere in "Service Above Self" did I see the requirement to be a philanthropist. If that is a requirement to be a Rotarian, then Rotary has to completely give up trying to recruit younger members.

Perhaps I was wrong to join Rotary, not being wealthy. Younger people (in general) are busy trying to start careers, start families, buy houses, and finance their 401(k). They have lots of demands on their time and their finances.

We have trouble recruiting them, because they see dues as having to pay to volunteer, when they could just go volunteer with the Young Leadership Council (YLC), Jewish Leadership Council, Habitat for Humanity, Rebuilding Together, The Mission, The Oznam Inn, The Ogden Museum, Toys for Tots, Make a Wish Foundation, etc....

If opening your checkbook is a requirement of being a Rotarian, than Rotary Clubs and RI need to stop kidding themselves that they will appeal to a "New Generation." There's nothing wrong with Rotary requiring huge gifts of money, but there needs to be some realism as to the type of person that will attract.

That being said, we have heard of this "Rotary Community Corps" or "Rotary Corps" which seems like it might be a solution to bring in people who are more interested in being workers and servant leaders; however, there is very little available on the subject.

Tony, Take a look at http://www.rotary.org/RIdocuments/en_pdf/770en.pdf which seems to contain everything one needs to know about Rotary Community Corps.

- Dan Mooers

I think that too many Rotary Clubs seem to forget international service. Rotary is an international organization, and the foundation spends most of it's money on international projects.

Many Rotary clubs forget this and concentrate on community service. This is important, but it is only part of our job as Rotarian's.

In my club of about thirty we give TRF about \$7000 a year. It is all through member contributions. We take out much more.

Over the past three years, we have completed one matching grant worth \$42,000. The club put in \$13000.

We have had 4 District Simplified grants for a total of \$20,000 for which the club contributed \$10,000.

So our club has spent a total of \$44000, including the individual member contributions. We have received \$63,000 in service for that.

Also I have not counted GSE, which totaled \$18,000 for the district. nor for a peace scholar which our district sponsored.

Our club has also raised over \$30,000 for the local boys and girls club, Funds for the Salvation Army and we spend another \$5000 in various community projects.

It's all how your club sees what to do. Just remember the foundation pays their expenses from interest, all the rest goes to services.

- Stanley Cahn, PP - Hilton Head sunset RC

There is growing feeling (in our Dist 3010) with many of the clubs, that nothing is being achieved by being a member of RI. A lot of these clubs feel that even though they contribute membership fees, their club does not get benefited in any way. Most of these clubs pay close to 25% of their membership fees as RI dues+Dist dues + Magazine.

The reason could be that a lot of these clubs never get funds for projects (matching grant or Dist simplified grant). To do a project, they have to accumulate all the funds on their own. The District is not helping these clubs by either educating them nor helping them in getting matching grant / district simplified grant. This makes the club believe that the DG is always asking them to contribute for TRF / Polio, Cancer Foundation, etc.

Do other Districts have this kind of a problem ? How is it taken care of ?

- PP Vijay Ahuja, RC Delhi Shahdara, D3010, New Delhi, India

Dear Rtn. Vijay, you need a few dedicated people that are knowledgeable about TRF and Matching Grants to give seminars around the district. *My wife Gloria and I started doing that with area clubs last year. Gloria was the District Matching Grant Chair for 3 years and I have been active in helping clubs find partners through ROTI.*

The success of our work got out and this year we were joined by the current DGSC and PDG in charge of TRF for the District and we spoke to several clusters totaling about 60 or more clubs. Many of the clubs were able to receive their first matching grant; and saw the value of their contributions to TRF being returned multifold to their projects.

RC Mabalacat has had at least 4 or 5 (5 is the max) MGs funded every year for several years. Another local club has received 1 or 2 grants a year for 7 years.

Success works...and seminars by successful workers creates more success for others. Remember..."Rotary Shares"

- PP Ron Nethercutt, District Information Chair
ROTI Chair 07-09, RC Mabalacat D 3790, Angeles City, Phils

In 2006-7 I had a challenge for our District here in South-Central Africa. I said that I would shave off my beard if we reached the \$100 per person goal for TRF. The goal was \$110,000. We raised over \$160,000 with fund raising events and personal giving. I shaved off my beard at the District Conference. (Our RIPPR, by the way, was Ray Klinginsmith!)

While I agree that giving to TRF is voluntary, it is also vital for what we do in our District in service projects. Our little club last year did \$210,000 in Matching Grant projects. We raised locally about \$8,000. We received about \$2,500 from local contributors for projects that were not included in the MG projects. (We built over 50 wheel chair ramps in the business district of Luanshya.)

*Without TRF we would have completed one water well and two toilets at one school. **Because of TRF we were able to drill 13 water wells, construct 35 toilets, distribute 20 biosand filters and provide a \$33,000 brick making machine to a vocational training school whose students build low cost housing as a part of their on-the-job-training. We were also able to give 60 wheelchairs to physically challenged residents of Luanshya including 10 small chairs to a school for handicapped children.***

We deeply appreciate our partnerships with Rotarians in the USA, Canada and Australia. The team at TRF - both in Evanston and Zurich - have been fantastic! I love TRF giving goals.

By the way, my wife and I are 2-diamond major donors of TRF so I am not "just talking."

Someone said Rotary is service, not money. That is correct... Service is made possible because of the generous giving of Rotarians.

As for "looking good," Jay... My wife insisted that I grow the beard back so I must look better with half of my face covered! ;^)

- PDG Patrick G. Coleman, Rotary Club of Luanshya
Luanshya, Zambia

This is both a sharing on TRF contributions and invitation (especially to Roti members from the Philippines) to CLE

My club RC Mandaluyong D3800 is now 49 years old. We have been a major contributor to the TRF. The total giving is currently is getting close to \$300,000.

Prior to 2004, we hardly bothered with RI programs (except hosting GSE team). Some have heard of matching grants, all have considered it a waste of time to do the paper work. We funded projects from donations of our members.

A project was introduced to me in 2004, when I was the centennial president. It is called Concentrated Language Encounter. (CLE). A methodology that empowers the teachers in elementary grades to teach effectively students to read and write with analysis and comprehension in any chosen Language or dialect. It is an exclusive Rotary Literacy project.

CLE is given for free to teachers exclusively via Rotary Clubs in their localities. It is a 6 years project.

The first year, a core group is formed and trained. Members are from the school divisions, principals and teachers. No Rotarian as member.

Then grade 1 teachers are trained by the core group. After a 5 half days training, the teachers of the pilot schools are given basic school supplies to be used to teach using CLE. Lesson plans and guide books are provided by the core group.

RI provides the manual and other handouts.

Second year, grade 1 teachers from the non pilot schools and grade 2 teachers of the pilot schools are trained . On the 6th year, all grade 6 teachers are trained.

In 2007, D3800 obtained a 3H grant of US\$300,000 for a 4 years project with the main objective of collecting data and present a proposal to the Department of Education (DEPED) to adopt CLE nationwide in 200 school divisions with about 14.25 million students in all public schools.

On June 2011, Deped accepted the proposal and issued the attached memo. This proved that CLE works.

We were able to implement saving and as a result, US\$42,000 was the excess fund from the 3H grant. This should have been returned to TRF, but TRF agreed to let us use the fund to start up CLE for 25 school divisions. Effectively extending the 3H project for a 5th year.

Of the 200 school divisions, 6 have completed the CLE projects covering all schools in their divisions. (Malabon, Navotas, Marikina, Mandaluyong, Taytay all in D3800 and Pagadian in D3850) 7 are on going (Masbate and Marinduque in D3820, with the support from RC Manila D3810, Makati and Muntinglupa in D3830, Caloocan, Valenzuela, San Juan in D3800)

Some divisions stopped after 2 years due to lack of support from the local Rotary Clubs and we hope these can be continue. They are from D3790, D3820, and one in D3800.

Without the fund from TRF, through the MGs and 3H, it would not have gone this far. That is to have a Rotary project, which is relatively new, be endorsed by DEPED. We had 3 MGs to fund our 6 years project.

The project created an impact and awareness amongst our members and they now see better why they are giving to the TRF. And we are not asking for big major contributions but in very affordable amount of US\$100 minimum. Many have given voluntarily and we ended up having to decline some as we have filled up the MG contribution requirements.

This also strengthen our relationships with sister clubs and other foreign clubs and districts. As we now mix fellowships and service.

Since then , we are actively giving and taking from the TRF. We have projects that used be to a dream, but now a reality and most important it is sustainable.

The invitation is to all Philippines Rotary clubs interested to be a part of this project to get in touch with me by email at albert8ang@yahoo.com

- PP Albert Ang, Secretary, D3800 CLE Committee

It is late and I am tired, but I would like to address many of the questions about problems.

Staff problems: The SAR (Semi-annual report) is due in Evanston by Dec.31. It has not been received yet. In the six years I have been secretary, I have only seen it arrive before the due date once and then by only ten days. Ridiculous!! Last year I had a contact for booth problems. I called a week before the convention and got a message that she would be unreachable for two weeks. I tried going through the "switchboard" and could not find anyone reachable. I finally called a person I had worked with a bit as District Secretary and she finally got me through to someone. Ridiculous!! There are many examples of lack of procedures and desire to service the membership. It has been improving, but much slower than should be tolerated. The organization may put service above self, but the staff sure does not.

Leadership problems: I have almost no contact with the big guns, so I am speculating. However, I know that the lack of contact with big guns means the leadership is not reaching out to the base. It would SEEM that the top leadership is isolated in their ivory tower. I know that on the District level, the Council of Governors in general does not relate to the individual clubs. That is a generalization - I know several on the Council who are very dedicated at the base, but there are far more that lose club level efforts. I will admit one very interesting paradox: RLI was established to move workers up, but it has had an interesting side effect of pulling some PDG's back to understanding what the club level is all about.

Progress: The "way things are" is so deeply entrenched that the organization will always be behind the times. I hope FV shows a change in approach.

TRF money: Patrick mentioned getting money from TRF for projects. Fine, but TRF is taking money from Rotarians and adding overhead cost (it does not take a Harvard MBA to understand the no overhead claim is smoke) then returning it to those very individuals for projects. To make this a bit clearer, if ROTI wants to raise money for a project, we theoretically have to give the money to TRF and pay a service fee and they then feed the money back. It is not that cut and dry, but the intent there seems to be to flow all funds through RI.

Dominance: There is a distinct feeling that RI wants to micro manage the clubs. That kills incentive and progress. Have fewer rules, but make them more rigid. Make an environment where clubs have freedom with just enough rules to maintain the brand. From the bottom of the pyramid, it looks like the last thing top leadership wants is creative approaches to the needs of clubs, because there is no encouragement for innovation with out it coming from the top.

Elitism: I have been working at District level for over a decade and have good personal relationships with district level people. I constantly hear complaints that the District holds itself separate and apart. I think there is a good point there. My District does not reach out to the "foot-soldiers". You have major problems if the workers have not bought in to the effort.

Now, I have to address the biggest problem of all: when I get passionate about a subject, my mind tries to focus on many things at once which means I ramble. I apologize for that.

As I said in the first paragraph, it is well into tomorrow and I need some sleep.

- Steve Sokol, RC Seneca, South Carolina, USA D 7750

peter - Tiscali <peter.sotheran@tiscali.co.uk> wrote:

Hallelujah! I am not alone! Every Fellowship and Rotary Action Group (RAG) must publish a statement to the effect that it is not an agent of and does not represent RI in any way. Yet the RI Board seeks to control them.

It's only eighteen months since one of the RAGs upset the RI Board (RIB). The direct knee-jerk outcome was a proposal that the RIB would limit the number of Directors in a RAG to 10, six of whom would be appointed by the RIB and the RIB would also nominate the Chair of each RAG. RAGs would be allowed to collect and hold money only for their admin & membership support purposes. All funds raised to further their aims such as water-aid, etc were to be channelled through TRF and would be made available if the RIB approved a project.

Luckily, after months of serious discussions the RIB backed down and the proposals were not implemented. You can understand why organisations such as Shelterbox remain a 'Club' activity, rather than seeking Fellowship of RAG status.

RI seems determined to impose its micro-management for its own benefit and convenience, not necessarily for the benefit of the members nor for the communities that we strive to serve. Their paternalistic 'we know best' attitude does not enhance the working relationship.

Dan Mooers wrote:

Peter, I don't understand how you take a statement about management of "clubs" and immediately relate it to RAGs. Rotary Action Groups are not Rotary clubs; they do not pay dues to Rotary International. They are permitted to use the name "Rotary" and the Rotary emblem only because of a decision by the RI Board of Directors. Since the RI Board created RAGs, the RI Board certainly has the authority to determine the conditions under which they are permitted to exist, in order to protect the Rotary trademarks and other official entities of Rotary, such as The Rotary Foundation.

RAGs are a "special interest groups". They obviously do good work, but in doing that work, some groups have, in effect, diverted funds away from TRF. If Rotary and TRF are going to build cooperative relationships with other organizations (which is the declared policy of RI and TRF), RI cannot allow, in my opinion, "special interest groups" to divert resources away from the programs of TRF.

RAGS - ROTARY ACTION GROUPS

G ' day Dan, geez mate you have touched on a very touchy subject here. Speaking as a Rotarian first and as a board member of RFFA, (RI's first approved RAG) I have to take you to task my friend.

Without RFFA and the funds we have raised over the past 8 years now well over US\$9 million we would never have been able to provide schooling for over 150,000 orphans and vulnerable children in Africa. These funds were raised in the main by the hard work of Marion Bunch our CEO of RFFA. These funds came from PEPFAR and other large organisations and we have been told many times that these funds would never have been given to our Foundation, never.

We have also been recipients of funds from the Coca Cola Africa Foundation and these funds have been used for large scale testing of people in East Africa for HIV a great project of RFFA and D9200 in April of this year and will be cranked up again in 2012 on a larger scale again with funds from the Coca Cola Foundation and again given specifically for this project and would never be given to our Foundation.

Sure we are allowed to use the RI symbols and we also engage local Rotary clubs in the projects we manage.

Now Dan I am a huge fan of the Foundation and what it does. I am a member of the Bequest Society and also a Centurion. The funds we raised on the Kili 2007 climb went in the main sent to the Foundation via DDF from D9700 and these funds have now all returned and gone to the beneficiaries with matching grants.

It is my opinion that the Foundation's Future Vision 6 areas of focus will bring the RAGs into the Foundation and RI together and that in the future these discussions will not need to take place. I honestly believe that the RAGs will not exist in their current form but will be absorbed into the 6 areas of focus and that will be a good thing. Especially WASRAG and RFFA.

Polio Plus will continue until polio is declared eliminated but it is going to take a huge amount of money and I have gone here before with this and I do not think that the majority of Rotarians realise just how much money is going to be needed, several billion \$ is the forecast of the GPEI. Where is that money going to come from? Not the Foundation and not Rotary maybe part of, but only a very small part.

The funding gap for 2011/2012 is \$700 million and so on until 2015. Who is going to fill that gap each year?

My point is this we need to get on with other humanitarian projects such as education for orphans and vulnerable children in Africa, clean water for Africa and so on, things we do well. If it was not for the RAGs then how do we continue with our projects?

So I have faith in our Foundation and our organisation and will continue to support our Foundation as I know that things will be sorted out soon, I have had three bad experiences with Matching Grants and the Foundation, all sorted now, but HQ sometimes loses it and red tape gets in the way of facts on the ground in developing nations.

Anyhow Dan I have faith in Rotarians like you and like Peter (toodle pip) but we have got ask questions and get answers.

However we all need to get on the ground in Africa and other areas of focus and get our hands dirty and learn what is needed.

I am a Rotarian first and foremost.

- John Glassford, Past President 08/09, Rotary Club of Coolamon District 9700, New South Wales, Australia

As a regular Rotarian, I am not privy to the many strategic decisions made within the board rooms of RI. There is one approach that I have a lot of trouble understanding as it seems contra-productive.

Other than the issue of complete control, why can RAG's not do fund raising. RI approves them as doing a good service, but then will not allow them to do fundraising to bring their fine projects to fruition. My personal interpretation is that the "powers" want to force everything through foundation so they have control or can at least extract a management fee. My club has a foundation for education work that we do. There are no costs (the board is made up of current or past club members and I believe the bank does their part as a community service.) Will RI try to help us by funneling these funds through TRF at a cost.

Sorry, Dan, I have the utmost respect for the time and energy that people like you are putting into RI. However, I think you should listen to advice on how much better things could run with some changes in approach. The one size fits all approach is severely flawed. One size does not fit all.

I hope I am not getting you riled. I just feel that you (RI) is making some very poor decisions because they do not realize what business they are in. As strong as the railroads were a hundred years ago, they did not flourish. Why?? Simple!! The railroads thought they were in the train business. They should have been in the transportation business. If they had realized that, today, you would be flying on Santa Fe, Chessy or Pennsy. There is a lesson there for RI.

- Steve Sokol, RC Seneca, South Carolina, SC District 7750

<peter.sotheran@tiscali.co.uk>

Subject: RE: [ROTI-Rotary] Relationships between RI, District and Club

Dan,

>you take a statement about management of "clubs" and immediately relate it to RAGs<

It was actually Steve who made that comment, but I agree with him up to a point. We are told what we are expected to give to TRF. We are obliged to pay for a magazine (except the Rtn spouses of US Rtns who are allowed a single copy per household). Don't get me wrong, I am happy to support TRF through my Club and happy to receive the magazine. But I would like the choice to be mine, not an obligation placed on me by others.

>If opening your checkbook is a requirement of being a Rotarian, than Rotary Clubs and RI need to stop kidding themselves that they will appeal to a "New Generation."

-ANTHONY<

Consider the effect on would-be members, as by Anthony. We are not all philanthropists. Not all Rtns are wealthy people, many will have greater priorities in their lives. All are generally willing to give of their time and skill but not all are able to keep writing cheques for charity.

RI's compunction to micro-manage was more evident in the relationship between RI and the RAGs. Luckily that issue has been more or less resolved and the heat has certainly dissipated. At the time, the issue did reveal how the RIDs sought to control organisations that they themselves had defined as independent organizations.>>>>>

Several observations:

Has anyone noticed how often discussions on this discussion group and others end up in this sort of a voicing of dissatisfaction?

Has anyone noticed how the response from those who have been or are currently in RI leadership is to defend that leadership rather than to use the criticism as a chance for improvement?

If this criticism comes from those of us who are so deeply involved in Rotary what do those Rotarians who only come to the meetings and work on the local projects think?

Could it be that the problem we are having with membership in the U.S. is not best fixed by more facebook pages or criticizing those potential customers for our product that is Rotary but instead an improvement of the product we are selling?

From one lonely voice that may not be so alone after all.

- Steve Coleman, SaveGSE.org, R.C. Danbury, Texas

Steve:

Why do you presume that "criticism" heard on this list (and other places) is not being used as a chance for improvement? Since there are only a limited number of people on this list "who have been . . . in RI leadership", I have to believe I am one of the Rotarians you are referring to.

If you were to talk with anyone who knows me well, you would quickly learn that I have, throughout my Rotary membership (and probably still am), been known as an instigator for change and certainly not someone who goes along with the person above me simply because that person is in leadership. However, when, such as on this list, I believe someone posting here does not have complete information or is drawing the wrong conclusions from either a misunderstanding or perversion of the facts, I do not hesitate to point that out. More problems are caused in Rotary clubs from mis-information than from the lack of information.

I have observed, especially on this list, there are some who see it as their mission to criticize RI authority or leadership in

general. Others seem to see themselves as provocateurs and try to drive a nail into someone whenever possible. I suppose some people get off by doing that. Just as you may think some people here always defend leadership or established programs, I suspect there are an equal number who think there are some who take great pride in pointing out they have never held a leadership position above the club and then relentlessly beat up on the RI Board of Directors or the Foundation Trustees. Some treat it as sport.

You are, of course, not privy to my many private emails which result from discussions on this list (although I have taken the liberty to sending you information about correct procedures). Like many Rotarians, I find it useful to read posts here and participate in discussions because I consider it part of the Rotary educational process.

- Dan Mooers D 7780

RAGs are now allowed to do their own fund raising. Not only that they are also allowed to contact every district in the world via the District Governors. RAGs are also permitted to com-

pensate key personnel within that RAG.

You can see the decision of the RI Board November meeting here on page 9: http://www.rotary.org/RIdocuments/en_pdf/board_minutes1011_en.pdf. **Rotarian Action Groups Committee Report Statement:**

The Rotarian Action Group Committee met on 29 October 2010 in Evanston, Illinois, USA and made several recommendations to the Board. The committee revised the guidelines for Rotarian Action Groups and discussed fundraising and paid staff with the groups, alternative funding models, and comments and suggestion from Rotarian Action Groups.

DECISION: The Board >>> encourages Rotarian Action Groups to bring proposals for alternate funding models to the Rotarian Action Groups Committee, for consideration and referral to the Board and Foundation Trustees.

More and more I feel that these decisions bring our RAG RFFA and maybe others closer to the Foundation's Future Vision's 6 Areas of Focus, just makes sense to me.>>>>>

- John Glassford, Rotary Club of Coolamon District 9700 New South Wales, Australia

1969-1970 JAMES F. CONWAY (law), Rotary Club of Rockville Center, New York, USA

ROTARY VISION: REVIEW and RENEW its procedures and programs, keeping the good, excising the ineffective.

"Rotary must be renewed constantly at the club level to avoid stagnation and at the international level to avoid retrogression. But Rotary at all levels depends on the individual Rotarian."

- The Challenge: Review and Renew
The Rotarian, July 1960

"The Rotary Foundation is not to build monument of brick and stone. If we work upon marble, it will perish; if we work on brass, time will efface it; if we rear temples, they will crumble into dust; but if we work upon immortal minds,, if we imbue them the full meaning of the spirit of Rotary as expressed in our Objects and with the just fear of God and love of our fellowmen, we are engraving on those tablets something that will brighten all eternity."

- The Rotary Foundation
The Rotarian, April 1929

VOTE FOR ROTARY

Help Rotary International win over 1 million free miles by voting every day this week here:

<http://10millioncharitymiles.com/>

As of December 26, Rotary ranked #3 with 10.2% of the total votes. To move to the #2 spot, Rotary needs to increase its percentage to 13.2%. The final allocation of free miles is based on percentage of votes so every vote counts.

Both the Shriner's Hospital for Children and the Make A Wish Foundation do great work! But so does Rotary. Rotary is about to rid the world of polio and thereby saving millions of children and future generations of children from polio. The free miles can help Rotary transport vaccine, supplies, and volunteer workers on Rotary sponsored polio and so many other service projects around the world. Please remember to vote every day this week and spread the word.

- **Don Higgins, Rotary Club of Pinellas Park, FL D6950**
don@higgins.net <mailto:don%40higgins.net>
www.don-higgins.net <<http://www.don-higgins.net/>>

VIDEO ON PLASTIC BOTTLES

This is probably old hat to many of you folks, but this video was the first time I saw this use of plastic bottles to light simple homes. Something we consider a basic necessity. This is from Philippines but could be done (perhaps IS being done in many places.)

click here <<http://wimp.com/lightenup/>> for interesting video

- **Todd Lindley DDS FAGD**

Rotary Foundation Alumni Coordinator, Zone 31
Past District Governor, District 6060, 2010-2011

RAILROAD TICKETS IN INDIA

Dr. Todd Lindley <rotary6060.tl@gmail.com> wrote:

Dear India ROTI members,

What are the various classes of railroad tickets in India and what are the differences?

My tickets are already purchased, but after a bit of browsing on the internet, I'm more confused than before. I see FC, 1A, 2A, 3A, 3E, 2S, and SL.

It surprised me that 2A was more expensive than FC, which I had assumed was First Class. Also, SL, which I thought was a Sleeper cabin, was cheaper than any of them.

Dear Rtn Todd;

In ROTI, ask and ye shall be answered; seek and ye shall find....

I am Rtn Shankar from RID 2980 & I understand that you are the RI Presidents Representative for our Conference VARNAM to be held in Salem during January 7th & 8th; We look forward to see you & your wife in Salem;

Regrading your query here is the explanation

1) FC..First Class ..NON A/c 4 in a cabin but non a/c ; Slightly cheaper than Second a/c bcz there is no a/c but still it is closed cabin

2) 1A..First a/c ..The highest class 4 in a cabin but a/c ; For everycoach there is coupe where only 2 in a cabin is designed

3) 2A Second A/c..... No cabin but 6 in a block which is not partitioned; Only screens . No middle berths

4) 3 A..Thirsd A/c.....no cabin but 8 in a block not partitioned Only screens & has middle berth

3E, 2 S & Sl are non a/c second & third class & i am sure you wont be booked in that class;

Are you coming to Salem by Train ? I thought car would be better by any means?

Any how i hope i have clarified your questions & we look forward to receive you

- **PPR. Shankar, District Chair Sports & Quiz**
RID 2980 India

BANTER: A CUP OF TEE

Chip Ross <chip.ross@shaw.ca> wrote:

To all the guys with cute little Grand Daughters. Beware Your smile for the day

One day my Gramma was out, and my Grampa was in charge of me. I was about 2 ½ years old. Someone had given me a little 'tea set' as a gift, and it was one of my favorite toys. Grampa was in the living room engrossed in the evening news when I brought him a little cup of 'tea', which was just water.

After several cups of tea and lots of praise for such yummy tea, my Gramma came home.

My Grampa made her wait in the living room to watch me bring him a cup of tea, because it was 'just the cutest thing!' Gramma waited, and sure enough, here I came down the hall with a cup of tea for Grampa, and she watched him drink it up.

Then she said, (as only a grandma would know), "Did it ever occur to you that the only place she can reach to get water, is the toilet?"

BANTER: THAT'S FRIENDSHIP!

One day a crab was running on the sea shore. The waves came on cleared the footprints of the crab.

Crab asked : being my friend why are you clearing my beautiful footprints?

Waves replied : A fishman was following ur footprints to catch you! That's why I cleared it off.....

That's the friendship.....

Rtn Makhan Sarda, PP / MPH

Chairman, The Rotary Foundation, RC Malda Central

A beautiful story Makhanjee. Another one:

"An ant fell in water. Seeing this a little birdee plucked a leaf and threw it in water for the ant to ride on it, and fetched it to the shore. Another day as the little birdee was singing happily on a branch of a tree a hunter came and aimed his arrow towards the birdee. Seeing this the ant bit the toe of the hunter who whimpered and the birdee could fly away."

- **Suresh Natu, PP RC Shaniwar Wada, India**
Assistant Governer Dist 3131



REACH OUT TO AFRICA (ROTA)

rahul meher <rahul.meher@live.in> wrote:

You must be aware of the fact that Maternal & Child Health is one of the thrust areas of Rotary International. The infant mortality rate in African sub continents is as high as 26% as compared to 1% in the USA & 6% in India. Combating Infant mortality is the focus of our serving RI President Kalyan Banerjee, who Initiated, ROTA (Reach out to Africa), a project on which he has been working for more than 3 years now.

Under this project various Rotary clubs from all over India have been donating generously towards the supply of Incubators to the African Sub continents. Our district has gone ahead by leaps & bounds & we are donating 38 Incubators & 5 Resuscitation systems to this project with the help of many Individual Rotarians, various clubs from our district 3131, and aided by the Global Grant. Our endeavour is to donate 100 Incubators this year for this noble cause.

As a step towards promoting this, R.I.D. 3131 is proud to organize a seminar on Reach Out To Africa (ROTA) on Wednesday, December 28, 2011. R.I. President Kalyan Banerjee will be the Chief Guest. Rotary Club of Pune South is pleased to host this historical event.

BANTER: WHERE I HAVE NEVER BEEN

I have been in many places:

But I've never been in **Cahoots**. Apparently, you can't go alone. You have to be in Cahoots with someone.

I've also never been in **Cognito**. I hear no one recognizes you there.

I have, however, been in **Sane**. They don't have an airport; you have to be driven there. I have made several trips there, thanks to my friends, family and work.

I would like to go to **Conclusions**, but you have to jump, and I'm not too much on physical activity anymore.

I have also been in **Doubt**. That is a sad place to go, and I try not to visit there too often.

And I have been in **Mourning**, that is an even sadder place.

I've been in **Flexible**, but only when it was very important to stand firm.

Sometimes I'm in **Capable**, and I go there more often as I'm getting older.

One of my favorite places to be is in **Suspense!** It really gets the adrenalin flowing and pumps up the old heart! At my age I need all the stimuli I can get!

One place I pray I never find myself is in **Continent!** Need I elaborate?

-Jesse Tanchanco, RC Loyola Heights, RI District 3780 Phils

Good spots, Jesse. I would go to them if I wasn't in Solvent!
- Chip Ross, Strathcona Sunrise Rotary Club, Courtenay, BC, Canada

To Jessie Tanchanco of Many Places. I loved it. It made me smile.
- IVAN, Rotary Metro Roxas, Roxas City, Capiz Philippines



jay dzurilla, RD 6630 (NE Ohio, USA) DG 2006-2007 wrote:

Distrito Governador Flavio Zunte, his wife Valdete and fellow Rotariano Howard ARE back home in Maringa, Brasil after their trip(s) here to the U.S. and to RD 6630, NE Ohio, USA.

DO not know if you want this or can use something as this, BUT, I think it is FANTASTICO when a Distrito Governador can travel to another Distrital "just to say hello" because we (all) DO belong to Rotary INTERNACIONAL !!!!!!!!!!!!!!!

THE ROTARIAN - DECEMBER ISSUE

I received the December issue of The Rotarian a few days ago. The cover shows an elderly Paul Harris standing on a snow & ice covered driveway to his home, known as Comely Bank. There has been an effort underway for several years to raise money to restore the home for use as a Rotary museum and meeting spot and preserve the history of Rotary.

The cover picture is quite nice and the short stories and pictures inside The Rotarian are nice as well.

I have heard some chatter about picking this issue up and trying to finish the job of funding an endowment to restore the home and provide sufficient income to keep it in good stead forever. I'm getting the information 2nd or 3rd hand, which is rarely good, but evidently this is going to be an issue promoted among my own class of governors, those who served in 2010-11, along with PRIP Ray Klinginsmith.

Some of you who attended the Chicago convention in 2005 may have visited the Paul & Jean Harris home. There is a Paul & Jean Harris Home Foundation which has begun working to collect funds and begin the repair and refurbishment necessary to bring the home back to proper condition. I'm a little sad at the current state of their website, but it does contain a lot of information if you have the patience to look through it. It lacks quite a bit in presentation style though. In spite of that, this is an issue I can support, so I wrote a check and put it into the mail today.

<http://www.paulharrishome.org/>

- Todd Lindley DDS FAGD, Rotary Foundation Alumni Coordinator Zone 31, Past District Governor, District 6060, 2010-2011; District 6060's web site: <http://www.missourirotary.org>

Please accept our deepest sympathy, Tom. After that many years of togetherness, the void will be deep. Know we are engulfing you in love from here in Southern California.

Averill and Art McCullough

**Condolences and prayers from
ROTI Leadership Council
Breadbasket Staff
and whole of
ROTI**



From: Rotarians@yahoogroups.com
[mailto:Rotarians@yahoogroups.com] On Behalf
Of THOMAS TELFER
Sent: Monday, December 19, 2011 2:03 PM
To: Rotary
Cc: RotaryBulletins
Subject: [ROTI] My Wife Hazel

My wife Hazel, passed away yesterday. We had been married 51 years.

P.P. Tom Telfer, B.A.

My blog is now available at
<http://jocoesjournal.blogspot.com/>

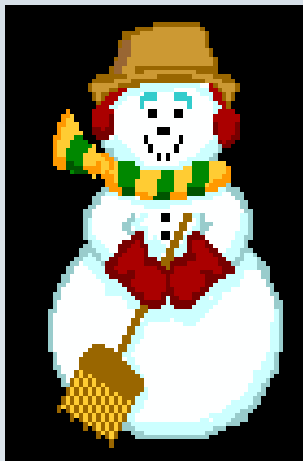
P.P. Tom Telfer, B.A.
P.H.F.
Past Chair of Rotary Editors & Publishers
Charter member of Rotarians on the Internet
Member Rotary Rolodex
Member ICUFR
Editor of Jocoe's Journal
Skype name : global63302751

JOCOE'S JOURNAL

DIARY OF A SNOW SHOVELER

Hello All,

I think that you will enjoy this fictitious(?) account of someone's first winter in paradise!! It reminds me of the first winter of my married life. We spent it in Vanderhoof, British Columbia, Canada. That winter it snowed 100" and didn't thaw until spring. The coldest temperature was -58 F. It was so cold that the fuel oil froze in the barrel and we had to heat our little house with the electric oven! Nevertheless, it was an adventure - we wore heavy coats during the day and snuggled close at night!! Now when I recount these events to my grandchildren they say "Right, Grandpa, and you walked to school in your pajamas each day"



- Chip Ross, Strathcona Sunrise Rotary Club, Courtenay, BC Canada

December 8: 6:00 PM. It started to snow. The first snow of the season and the wife and I took our cocktails and sat for hours by the window watching the huge soft flakes drift down from heaven. It looked like a Grandma Moses Print. So romantic, we felt like newlyweds again. I love snow!

December 9: We woke to a beautiful blanket of crystal white snow covering every inch of the landscape. What a fantastic sight! Can there be a more lovely place in the whole world? Moving here was the best idea I've ever had. Shoveled for the first time in years and felt like a boy again. I did both our driveway and the sidewalks. This afternoon the snowplow came along and covered up the sidewalks and closed in the driveway, so got to shovel again. What a perfect life.

December 12: The sun has melted all our lovely snow. Such a disappointment. My neighbor tells me not to worry, we'll definitely have a white Christmas. No snow on Christmas would be awful! Tony says we'll have so much snow by the end of winter, that I'll never want to see snow again. I don't think that's possible. Tony is such a nice man. I'm glad he's our neighbor.

December 14: Snow, lovely snow! 8" last night. The temperature dropped to -20. The cold makes everything sparkle so. The wind took my breath away, but I warmed up by shoveling the driveway and sidewalks. This is the life! The snowplow came back this afternoon and buried everything again. I didn't realize I would have to do quite this much shoveling, but I'll certainly get back in shape this way. I wish I wouldn't huff and puff so.

December 15: 20 inches forecast. Sold my van and bought a 4x4 Blazer. Bought snow tires for my wife's car and 2 extra shovels. Stocked the freezer. The wife wants a wood stove in case the electricity goes out. I think that's silly. We aren't in Alaska, after all.

December 16: Ice storm this morning. Fell on the ice in the driveway putting down salt. Hurt like hell. The wife laughed for an hour, which I think was very cruel.

December 17: Still way below freezing. Roads are too icy to go anywhere. Electricity was off for 5 hours. I had to pile the blankets on to stay warm. Nothing to do but stare at the wife and try not to irritate her. Guess I should've bought a wood stove, but won't admit it to her. God I hate it when she's right. I can't believe I'm freezing to death in my own living room.

December 20: Electricity's back on, but had another 14" of snow last night. More shoveling. Took all day. The snowplow came by twice. Tried to find a neighbor kid to shovel, but they said they're too busy playing hockey. I think they're lying. Called the only hardware store around to see about buying a snow blower and they're out. Might have another shipment in March. I think they're lying. Tony says I have to shovel or the city will have it done and bill me. I think he's lying.

December 22: Tony was right about a white Christmas because 13 more inches of the white stuff fell today, and it's so cold it probably won't melt till August. Took me 45 minutes to get all dressed up to go out to shovel and then I had to go to the bathroom. By the time I got undressed and dressed again, I was too tired to shovel. Tried to hire Tony who has a plow on his truck for the rest of the winter but he says he's too busy. I think the rotter is lying.

December 23: Only 2" of snow today. And it warmed up to 0. The wife wanted me to decorate the front of the house this morning. What, is she nuts!!! Why didn't she tell me to do that a month ago? She says she did, but I think she's lying.

December 24: 6". Snow packed so hard by snowplow, I broke the shovel. Thought I was having a heart attack. If I ever catch the S.O.B. who drives that snowplow, I'll drag him out and pound him flat! I know that he waits for me to finish shoveling and then he comes down the street at a 100 miles an hour and throws snow all over where I've just been! Tonight the wife wanted me to sing Christmas carols with her and open our presents, but I was too busy watching for the snowplow.

December 25: Merry Christmas. 20 more inches of the frigging slop tonight. Snowed in. The idea of shoveling makes my blood boil. God I hate the snow! Then the snowplow driver came by asking for a donation and I hit him over the head with my shovel. The wife says I have a bad attitude. I think she's an idiot. If I have to watch "It's a Wonderful Life" one more time, I'm going to kill her.

December 26: Still snowed in. Why the hell did I ever move here? It was all HER idea. She's really getting on my nerves.

December 27: Temperature dropped to -50 and the pipes froze, but at least it is too cold to snow!

December 28: Warmed up to above -30, still can't snow any more though....SNOWED ANYWAY, and the HAG is driving me crazy!!

December 29: 10 more inches. Tony says I have to shovel the roof or it could cave in. That's the silliest thing I ever heard. How dumb does he think I am?

December 30: Roof caved in. The snow plow driver is suing me for a million dollars for the bump on his head. The wife went home to her mother. 9" predicted for tonight.

December 31: Set fire to what's left of the house. No more shoveling!

January 8: I feel so good. I just love those little white pills they keep giving me, but why am I tied to the bed?

Congratulations Chip! Very much deserved and very interesting profile.

- PP Philip Merritt, RC Mabalacat Clark D3790 Pampanga, Philippines

Chip,
Great to see u as ROTlan of the month. Best wishes are sent here for more accolades.

- G N Sivaramakrishna
Sent on my BlackBerryR from Vodafone

*Dear Chip and all
Congratulations. Thank You So Much for your love and commitment to Roti as well to all of us. The visual of the Breadbasket... I loved that too.*

Merry Christmas.
Deborah Perrone, RC Ribeirão Pires Estancia D4420

ROTI-TECH PDF TO EXCEL CONVERTER

Any suggestions for a stable PDF to Excel Converter, preferably free download.

- DGE Upkar Singh Sethi, District 3070

I use the Nuance PDF reader which is free to download. When I have occasionally needed to convert a PDF to Excel I have used the Nuance PDF Reader menu to launch an online fee converter. I have always received my converted file back in a matter of minutes and with a high degree of accuracy. They also have a purchase product that will do the same conversion on your machine without passing the file to the Internet.

**- Don Murphy, Rotary Club of Salida, CA, USA
Past District Governor 10-11, Rotary District 5220**

SUBMITTING ENACTMENT TO COL

Can someone direct me to where I can find how and where I should submit an enactment to RI for consideration by the COL. We will count district votes this week and if it is approved I know the deadline is December 31 so we do not have a margin for error as to how and where we submit it. I've looked in the RI bylaws and if it is there I cannot find it.

- **Steve Coleman, SaveGSE.org, R.C. Danbury, Texas**

Steve, I did a google search formatted like this:

Site:rotary.org council on legislation

Then scrolled down the page and on the left side there was a link to "How to Propose Legislation"

At the bottom of that PDF there is an address. Bonne chance.

- **Todd Lindley DDS FAGD**

HOW TO GET MEMBER'S ID

Will you kindly help me to provide me the ID number of the rotary member.

- **T.Krishnarao, RC Hindupur, RID 3160**

Steve Sokol <ssokol@ix.netcom.com> wrote:

Either the club secretary or the club president need to go to the RI page and log in under "member access". Now, click on "update membership data". If you do not see the name there, (s)he is not registered in your club. Click on "add members". Click on "search for an existing member" to see if (s)he is in another club. Fill in the name and submit the search. If you find him click on the name, otherwise click on "members". This will take you back to the club data and you can click on "Add Members" again [I can not explain why, but that is what works.] This time just click "continue" and it takes you to the add member page. Fill in the data you have and hit "save". Now if you go back to the Club member page, (s)he will be there with a number which is the "official" RI number.

The flow is more than a bit awkward, but it is how you do it. I can do it off list if you have minor problems.

FIRST ROTARY CLUB WITH FB MEMBERS

Aswini Kar <aswini.kar@gmail.com> wrote:

The first Rotary Club with Face Book friends "Rotary Club of Bhubaneswar Friends" has been chartered on 25th November 2011 in Bhubaneswar, Orissa, India. It is in District - 3260. The club was initiated by PDG Aswini Kar and his wife Ann Mini Kar. Both of them invited their face book friends to start a new rotary club and with 27 charter members the club started in August. The club meets on every Wednesday at 7.30PM at Hotel New Marian.

All the members of this club were unknown to Rotary before they joined the club. The average age of the club is 30. Out of 27 charter members six are women (23%). Rtn. Mini Kar is the charter President. The club has already done four service projects in last 4 months.

My heartfelt congratulations & kudos to everyone at Rotary Club of Bhubaneswar Friends.

- **Rtn Tanu Roy, CICO & Webmaster, RC Garden Reach D 3291**

pdg dougv@TheFamilyBusinessAdvisor.com" wrote:

Hi Tanu:

I'm interested to know where Garden Reach is since I'm scheduled to be the District Conference speaker at D3291 in January 2012.

Maybe we will get to meet you in person, plus other ROTI members during our upcoming trip to your country.

RC CUMBERLAND in U TUBE

Hello All, Our Fellow ROTIAN John Challender has done it again!! See http://www.youtube.com/watch?feature=player_embedded. <http://www.youtube.com/watch?feature=player_embedded&v=aWIGhshfohs> &v=aWIGhshfohs to learn about some of the activities of John's club, Cumberland Centennial (RD 5020). John is a Charter Member, and Mentor to all its members.

- **Chip Ross, Strathcona Sunrise Rotary Club**

GREAT PROJECT FOR GREAT CAUSE

A Rotarian in D 3790 (northern Philippines) has designed a 4 day biking event as a fund raiser for Shelter Box. Sean Veracruz is what I call a 1st class Rotarian. Five years ago his wife gave birth to twin boys and they named them Paul and Harris. Sean donated to The Rotary Foundation and Paul and Harris were both made Paul Harris Fellows. How's that for a unique story?

The Philippines has been the beneficiary of the Shelter Box program several times and Sean's Bike for Shelter Box aims to raise funds, introduce and promote awareness on shelter box. For this first tour, Rotarians, cyclist, and supporters will bike the route from Vigan to Subic with the following schedules;

Jan 11, 2012 Vigan City- San Fernando City, LU

Jan 12, 2012 San Fernando City, LU- Dagupan City

Jan 13, 2012 Dagupan City- Sta Cruz, Zambales

Jan 14, 2012 Sta Cruz, Zambales- Subic, Olongapo

I am estimating that each leg is 40 - 50 miles. Sean is planning future bike runs in different parts of the district. The project has the approval of our DG and Shelter Box Chair for the Philippines. The registration fee is 1,500 Phil pesos (appx \$35.00 USD) with cycling jersey and meals.

If you are looking for something different to do in your district, try something like this. It could raise money for a good cause (whatever you choose) and bring attention to Rotary.

- **PP Ron Ron Nethercutt ROTI Chair 07-09**

RC Mabalacat Angeles City, Philippines

Botelho José <josmacbot@hotmail.com> wrote:

Ron, I would like to include this email (in Portuguese, of course) in our Club Newsletter, if you don't mind. Nice project and one more way to promote ROTI in my District. See the version:

Um rotariano do Distrito 3790 (nordeste da Filipinas) criou um evento de 4 dias de ciclismo como forma de arrecadar fundos para o programa Shelter Box.

Sean Veracruz é o que se pode chamar um rotariano de primeira. Cinco anos atrás sua esposa deu à luz gêmeos e eles os chamaram Paul e Harris. Com a contribuição de Sean à Fundação Rotária os dois, Paul e Harris, são Companheiros Paul Harris. Não é uma história única?

As Filipinas tem sido beneficiadas pelo Programa Shelter Box em várias ocasiões e a iniciativa de Sean, Ciclismo em prol da Shelter Box, objetiva levantar fundos, introduzir e tornar conhecida as Shelter Box.

A primeira realização com rotarianos, ciclistas e voluntários vão pedalar de Vigan a Subic com o seguinte programa:

Jan 11, 2012 Vigan City- San Fernando City, LU

Jan 12, 2012 San Fernando City, LU- Dagupan City

Jan 13, 2012 Dagupan City- Sta Cruz, Zambales

Jan 14, 2012 Sta Cruz, Zambales- Subic, Olongapo

Cada etapa deve ser, em minha estimativa, de 60 a 80 km.

Sean está planejando outros circuitos em diferentes partes do distrito. O projeto foi aprovado pelo Governador Distrital e pelo responsável pelo Programa Shelter Box nas Filipinas. A taxa de inscrição é de 1.500 pesos filipinos (aproximadamente US\$35.00) e dará direito a camiseta e às refeições.

Se você está procurando algo diferente para promover em seu distrito, experimente algo parecido. É uma forma de arrecadar recursos para uma boa causa (a que você escolher) e chamar a atenção para o trabalho de Rotary.

I don't follow Shelter Box Program. Pls. brief me so I can understand it in depth.

- **IPP Mayur Sheth.R.C Bharuch.RIDist.3060.India**

Dear IPP Mayur Sheth,

With reference to your post on ROTI, I am pleased to forward RID Shekhar Mehta's monthly letter detailing Shelter Box as implemented in India. Hope this answers your query.

- **Madhukar Malhotra, Member, Rotary Club of Chandigarh Past District Governor 2010-11, District 3080**



DIALYSIS AND TRANSPLANTS

Tune in to RadioRotary this Friday, December 16, at 9 a.m. New York time featuring Rotarian Roger Lane, Rotary District 7210's Organ Donor Advisor, and Registered Nurse Sarah Wilbur who discuss current medical improvements in the areas of dialysis and transplants, as well as some dietary suggestions (that may be surprising to some) to avoid kidney problems.

Listen Live on www.hvradionet.com. Listen at any time after the broadcast on Radio Rotary's website, www.radiorotary.org, or subscribe to our podcast on I-Tunes:

<http://itunes.apple.com/us/podcast/radiorotary/id397316801>

**- Jonah Triebwasser
Co-Host, "Radio Rotary"**

Listen to Radio Rotary Fridays at 9 am - WGHQ 920AM - WBNR 1260AM - WLNA

1420AM or <http://www.hvradionet.com/>

Subscribe to Radio Rotary on I Tunes!

<http://www.radiorotary.org/><<http://www.radiorotary.com/>>

<http://www.youtube.com/watch?v=1rzF-3SU-UA>

Past District 7210 Membership Chair

Past-Assistant Governor, District 7210, Region 3

Past-President, Rotary Club of Red Hook

Hello Jonah, I am a kidney donor, to my brother, in 1993 and feel just great. I would be happy to provide you, or anyone else for that matter, further information from a donor's perspective.

- Ronald Durchfort, President, RD Nova Lima/Jardim Canada – 4520 Brazil

CNN HERO OF THE YEAR

TO ALL MY CYPERSPACE FRIENDS, In a week, is Christmas Day to the Christian world, where the "hopes and fears of all the world are met in Thee that night".

Despite the many problems and mess that are happening in our planet today, there are still many wonders and inspiring stories that prove that there are still many great heroes among us... And if you have not seen the 2011 CNN HEROES OF THE YEAR, GO ON YOUTUBE AND SEE IT AND BE INSPIRED.. or simply go google it...

Below is just ONE editorial of the 2011 HERO OF THE YEAR, who happens to be a half Filipino (mother is a Filipina and father is an American) who is now working in Indonesia as a midwife)... Read and be inspired: MERRY CHRISTMAS!

Editorial <<http://opinion.inquirer.net/column/editorial>> *Gift of heroes*

***Philippine Daily Inquirer<<http://opinion.inquirer.net/> source/philippine-daily-inquirer> *11:08 pm | Sat Dec17th, 2011 ***

Amid all the ugliness arising from the schism between the administration of President Aquino and the Supreme Court under Chief Justice Renato Corona shines some truly meaningful and welcome news. The international news giant CNN named Robin Lim as its 2011 CNN Hero of the Year. CNN itself described Lim as "an American woman who has helped thousands of poor Indonesian women have a healthy pregnancy and birth," referring to Lim's Yayasan Bumi Sehat, or Healthy Mother Earth Foundation.

Absent in that portrayal is the fact that part of Lim is Filipino. And in her heart and her deeds, she is all Filipino. The daughter of a Filipino mother and an American father, Lim spent part of her life growing up in Baguio, surrounded by the old world traditions of her grandmother, Vicenta Munar Lim, who had been a midwife and a healer. "Lola Vicenta had such a profound influence on my life that I did not identify with my American-half. I became deeply Filipino, like my mother and my lola, so much so that when I was a teenage mother-to-be, I chose to give birth, not in a hospital with a doctor, but with a midwife," Lim said. She gave birth to daughter Deja safely.

Not everything always go so well. Two decades ago, Lim experienced the pain of losing a loved one when her younger sister Christine died due to complications arising from her pregnancy; her baby died as well. All this despite the fact that Christine was in the United States, known as a bastion of the best medical care in the world.

*Lim is a big believer in alternative and holistic medicine including herbal remedies and homeopathy. This belief comes from way back in Lim's past when her lola inspired her to go down a different path. A registered midwife in the United States, Lim believes in the integration and balance between the old and the new when it comes to giving birth: "Doctors and midwives, in particular, must practice in a culturally appropriate manner, including the hilot on the birth team. I have seen this working in Mt. Province in the Philippines, and my organization, Bumi Sehat, instituted it in Aceh post-tsunami (after the 2004 tsunami)."

GLOBAL GRANT - HIV AIDS

Is anyone out there doing a HIV AIDS project as a Global Grant? other Grant?

Here in Bali, incidence of HIV-AIDS is growing and we are currently investigating how we can help with prevention and treatment.

Thanks in advance for any suggestions you might have.

- PP Sue Winski, RC Bali Ubud Sunset

Hi Sue, here in the Philippines, the HIV statistics went up among call center workers to an alarming level middle of this year. Maybe we can work together to check how can we bring down the number.

- Praxedes Tan, Charter President, RC Cosmopolitan San Juan D3800

Sue, As others have already suggested, the RFFA (Rotarians For Fighting AIDS) Action Group is the lead organisation in the world of Rotary. Marion Bunch, their CEO is passionate about their work and they have masses of experience and a number of major contacts across the world.

Since the epicentre of the world AIDS epidemic is sub-Saharan Africa, that's where they tend to concentrate their efforts but if you have a well defined plan, you may be able to tempt them to work further afield.

ROTlan John Glassford is your man! I believe he still serves on the Board of RFFA and there are others here in ROTI. My connection goes back to 2008 when I was assistant to the Mission Director and was the Logistics Manager at RFFA's AIDS mission to the slums of Nairobi. Our medical staff examined and treated 11,000 (yes, eleven thousand!) patients in 8 working days!

You may also wish to make contact with Dr. Mohammed Kibirige, a retired paediatrician based in the UK. He has developed a highly effective screening and drugs protocol that prevents the transmission of the HIV from a pregnant mother to the unborn infant. In field tests in Uganda they achieved better than 98% of treated mothers giving birth to infants with 'clean' blood. This is a step towards halting the spread of AIDS and creating an AIDS-free generation.

Dr. Kibirige's scheme involves training local medical staff to apply the screening process effectively at district medical centres and then to assist with funding the cocktail of medications. This makes the process locally sustainable once it has been successfully established.

Dr Kibirige is Ugandan, hence is interest is launching in that country but again, with a well prepared plan, you may be able to persuade him to help you develop his protocol in your country. You may find it helpful to visit

www.aidsbirthrightforchildren.org or to e-mail Dr Kibirige at mskibirige@btinternet.com.

- Peter D1030 in UK

Much of her devotion to the age-old traditions of the Filipino hilot can be seen in Lim's novel, published in the Philippines in 2009. "Butterfly People" is a paean to old Baguio and the story of a child named Vicenta who grows up to learn the traditional ways of healing. Lim helped out by freely providing care to others in Baguio and nearby places.

The path to becoming CNN Hero of the Year began with Lim's decamping to a tiny village in far-flung Nyuh Kuning in Bali, Indonesia. She established the Yayasan Bumi Sehat in 2003 to provide care to the poorest of Indonesian mothers and their infants, earning her the name "Ibu Robin," or "Mother Robin." Lim clearly applied the art and the heart she found here in the Philippines to save babies in Indonesia.

The recognition from CNN puts her mission in the public eye. "Every baby's first breath could be one of peace and love. Every mother should be healthy and strong. Every birth could be safe and loving, but our world is not there yet," Lim said upon accepting the award in Los Angeles.

Filipinos are familiar with the award, after a Filipino, Efen Peñaflores Jr., won the 2009 CNN Hero of the Year award. Peñaflores, a teacher by training and social worker by calling, championed education for out-of-school youths by teaching from his "pushcart platform" and founding the Dynamic Teen Company at 16. Together with DTC, Peñaflores volunteered to teach as many impoverished Filipino youths as he could through the K4 (Kariton Klasrum, Klinik & Kantin) Outreach Program. Like Lim, Peñaflores was selected as one of 10 such CNN heroes and chosen by a Blue Ribbon Panel that adjudged his contributions as being the most significant. Lim's efforts underwent the same process and received the same honors.

*That two Filipinos have been named CNN Hero of the Year in the five years the award has existed speaks to the fact that, despite the deep divisions that scar our country, ours has always been a nation given to sacrifice and service to others.

- Ernie Delfin, A proud Rotarian and a businessman

Two days ago our DG, her Dist Treasurer and driver were involved in a very serious accident. Fortunately nobody died, but DG Digna Ragasa has multiple fractures, including a broken hip. The drive remains in Intensive Care.

D 3790 has 96 clubs and the district covers appx 200 miles north to south and many of the roads are poor and with much traffic.

The custom here for the Governor to make ALL the annual inductions and club visitations, plus many special club events in addition to numerous district activities. Over 150 trips may be required here for the DG at early/late hours and over dangerous roads.

How many districts have a similar requirement of the DG? Are other districts involving their DG in this fashion? Any information others can provide will be appreciated.

Our district has 16 clusters of clubs of 6-10 each and I am hoping to encourage the cluster to come together for their inductions. This would reduce the amount of inductions to only 16, thereby lessening the workload considerably. Maybe just a dream, but would save time, expense, and maybe health and future disasters of our Governor.

- PP Ron Nethercutt D3790 Phils

Ron, our District 3150, part of the state of Andhra Pradesh in South India, similarly has nearly 100 clubs and counting. While about 30 of these are in the twin cities of Hyderabad and Secunderabad, the rest are spread over a large area, a radius of perhaps 300-400 kms. As in your district, our DG is invited to several installations at the year beginning; fortunately, since clubs do not want to postpone these too far into the month of July, many are done without the DG. In addition, the DG attends project inaugurations and, of course, does the official visit to every club for a full day. And most of the travel for this is done by car, on perilous road populated by madcap truck drivers, and mostly at night after a late club dinner party to try and get in as many club visits as possible.

I know of at least two DGs who have had very narrow escapes during their tenure. In one case, the car was totalled, but fortunately, both the DGs got away without injuries.

I totally agree with your suggestion that clubs must find ways to combine functions and reduce the stress on the DG, but I hardly think this will happen as the installation function is the one which every president looks forward to the most. Perhaps the solution is smaller districts, with less clubs in each - this would make for better attention from the DG as well. Of course, this swells the number of DGs to attend the training programmes, etc, but perhaps these should become more regional... I certainly see changes are going to be required as we go along.

And Rotary has become increasingly expensive too!

- T Raghav Rao, RC of Jubilee Hills, Dist 3150 Hyderabad, India

Drvg099 wrote:

Will clubbing or grouping.help in avoiding accidents?

I think that was funny!!!! I guess what was meant that clubbing or grouping will reduce costs and will also reduce the necessity of undertaking meaningless travel - time which can be productively utilised by all.

- Vijay Madhira, Vijayakumar Madhira, R I Dist 3150

Anthonyamy Francis<anthon37@streamyx.com> wrote:

I am in favour of joint installations. Nearby clubs can get together for it. It not only be economical but also bring about goodwill among members of clubs that meet for fellowship on that day. Some times we pay too much emphases to ceremonies and functions like installations but the main objective of our existence is to be of service to the community. It would be meaningful to spend the money an human resource used in installations and ceremonies like this on community service by which the public will come to know what Rotary is.

On the 1st. day of July the new club official must take over with or without an elaborate Installation ceremony.

The district governor visiting each club in their district is not required, but is a common habit. Please read "duties of the district governor " in the Manual of Procedure. I'm just mentioning this because I keep seeing it repeated time and again. Pretty soon folks will start believing it's true. (Like the old wives tale that the minimum donation to our Rotary Foundation is \$100.)

- Todd Lindley

Dear PP Ron,

Well wishes and a speedy recovery to DG Digna, your treasurer and her driver.

I started with Rotary in District 7020 (Caribbean) where the 72 Rotary clubs are spread across 11 countries and 13 Islands. Many of the island roads are narrow, windy, unlit and sometimes in disrepair. As the DG has to visit each club he/she would be met at the international airport (flying between the islands) many miles from the club he/she would have to visit so there is a lot of travel involved in getting to and from each club. Often their journey's started early in the morning and went late into the night where travel to and from a single club could take several hours. In recent years some of the DG's and AG's have tried to reduce the amount visits by grouping them in clusters or multiple clubs. I don't believe there was a formal push to do this however.

In my current district 7080 (Southern Ontario Canada) our district has 50 clubs and the drive from one end of the district to the other is less than 3 hours. The majority of the roads are in

good order and most clubs are within a few miles a major highway. The DG or any of the district officials are not as stressed as in my previous district nor the one you mention in your email.

I have had the opportunity first hand to experience both ends of the Rotary spectrum when it comes to travel. I can see why many North American DG's would not be able to understand (unless they have travelled to other districts) the dangers involved (travelling late on deserted roads the danger of crime is overlooked but is very real), the amount of time spent in travel, nor the cost as many only have to drive a few miles down the

road (taking only a few minutes) from club to club on well maintained roads.

With the world economy being what it is and the push for 'green', looking for ways to reduce the amount of travel just makes economic sense. The benefit of being safer would be welcome to everyone (especially the families of Rotary) if less travel is required. My wife's worry lines can attest to the amount of stress she endured over the many years that I was on the road travelling returning from one Rotary function or another when we lived in district 7020. Today she isn't as worried as the distances are much less and the roads are in better condition, but doesn't mean she still doesn't worry ;-)

I know that several clubs and districts are attempting to utilize technology (conference calls, video conferencing) to facilitate meetings thereby reducing the need for travel.

That being said I still believe fellowship is better in person. :-)

- Andrew Williams, Kitchener - Waterloo Cluster (District 7080) PP, Rotary Club of Savanna-la-mar, Jamaica D7020

In our District usually the Club President does the induction of new members, however if it is at the same time as the DG's visit many times, if asked, they will do the induction while visiting. It seems to be nice to have that happen for new members when possible. So I guess our answer is that it works both ways here in District 7230!

- Sharon Irving, Charter President, Cortlandt Rotary Club Cortlandt Manor, NY US, District 7230

Dear Ron, situation in D4710 is very much the same but for the inductions which are not always with the presence of DG. We are now 66 clubs and I traveled 32000 km in my year. Tell me about late night desert roads with only Luiza helping me. A PDG in my District used to say that late night traveling the only people one find are truck drivers and Rotarians. Hope your DG and driver recover promptly. Best wishes

- José Machado BOTELHO, Rotary Club Londrina Norte Governador 2009-2010, Distrito 4710

Our best wishes for the quick & complete recovery of DG Digna and her colleagues. As DG10-11 I had to travel to 75 clubs and crisscrossed the district covering 200 km x 300km over bad roads and probably the most undisciplined drivers any where in the world with many late nights out. Empowering AG's and delegating is the key to keeping your sanity and achieve success. The inductions can be done by the AG and DG can recognise all new inductees at the time of his official club visit. However change is resisted initially but soon all accept a rational change and it becomes the new norm.

- Madhukar Malhotra, PDG, RC Chandigarh D3060

DG IN CAR ACCIDENT...and MORE



3790 DG DIGNA RAGASA CAR WRECKAGE

Out here in our region a prospective DG is one who is a major donor, and a possible district conference chair.

on District Conferences; clubs which register 100% for a conference are recognized with a plaque of recognition. And we even encourage Anns and Annettes to attend and there are some programs on the agenda to suit both of them.

Just for information the current year District Conference fee is USD 30 for Rotarian, 20 for Ann and about 17 for Annette. Then there is a gift for everyone included in this. The fee is for 2 day program and 3 meals + a breakfast.

- Rtn G N Sivaramakrishna, RI District 3230

We too suffer from low participation at the district conference, but this is understandable because the cost of attending a district conference is very high even with the discounts given by the hotels. I try to attend every conference, but I always take some time wondering if the money I spend attending a conference could be better used as a contribution to The Rotary Foundation. If I had not attended these conferences, I would have been a major donor several years back, and I would have an even greater satisfaction of helping others. It is nice to think that a District Governor should be a major donor, but I don't see this as a relevant or exciting criteria. Rotarians should give to the Rotary Foundation because they believe what they contribute will help to make our communities locally and worldwide a better place.

- Alan Okinaka, Rotary Club of Hilo Bay, Hilo, Hawaii

fr: <ssokol@ix.netcom.com>

Alan, you mentioned something that really bothers me. The District claims that they have a great deal on the rooms. I have been making my own reservations, because I can get the rooms cheaper. That is part of the negotiation. I handled the ROTI rooms in Bangkok. I refused all the hotel perks to get the business. We got a super rate. The harm is that ROTI has to pay for a hospitality room if we get one. To my knowledge, we have never done that and with a great lobby lounge, I do not think we need to at this Convention.

A major mistake, at least in my District, is that the Conference is designed for the leadership and not the future leadership. I go, but being realistic, I will be dead in 15 years. The 25 y/o who could be a fabulous DG in 15 years can not afford to go.

In stead of freebies for the PDGs, we should be doing what ever it takes to entice the future leadership. Rotary loves to honor the old and not visualize the importance of the young (and coming).

Remember, the young are going to be selecting the retirements in which we old guys are going to be living.

I believe the attendance problem with District Conferences can be boiled down to two problems. First, they are expensive. It has always perplexed me when the DG or ADG comes to the club and tells our new members how important it is that they attend. What seems to be lost on the messenger is that they are asking a thirty-something Rotarian with a family to spend his family vacation budget on 3 or 4 days in an expensive hotel for no good reason. He/She really doesn't need to spend that much money to watch people telling each other how good of a job they've done.

Second, they are boring. After you've been to a few, they get to be very repetitious. Same people, same topics, just all the same. I really don't know how you change that. I think we need to realize that there are Rotarians who live and breathe this stuff and for them a district conference is a big deal. For others, they have other priorities and they really don't need to spend the money and time involved in a DC.

I question if maybe district conferences no longer fit in today's Rotary. Personally, I wish we could have a day committed to an annual district business meeting where we had time to address issues rather than the hurried business meeting we have in conjunction with the DC. (Having the business meeting in conjunction with the DC is a requirement in the MOP.) I don't know that I've ever been to a DC that couldn't have been taken care of with a Saturday meeting in the district if all of the irrelevant fluff (note: fluff is being used to replace the usual terminology I would use) were removed.

- Steve Coleman, SaveGSE.org, RC Danbury, Texas D5890

For the past 50 plus years, District 7570 has held its district conference at the Homestead Resort. The conference starts Friday afternoon and ends Sunday morning. Hotel reservation includes breakfast Saturday and Sunday and dinner. Friday and Saturday. Conference registration includes lunch on Saturday. The hotel costs are US \$282 for two people. Conference registration adds US \$130 per person. Basically it costs a couple \$550 to attend. There are single day registrations available for Saturday for \$70 including lunch.

We look at it as a nice escape to a first class resort.

- PP Nate McClure, RCLynchburg, Virginia, USA D7570

It's amazing to learn about the differences in costs to attend various district conferences. Alan has told us that it likely costs \$1,000 to attend his conference in Hawaii. GN Siva in Chennai tells us his conference runs about \$30 per person to attend. (Plus hotel cost, I guess - or is there home hosting arranged somehow G.N.?) He tells us about 75% of the Rotarians in his district attends.

My own conference this past June cost about \$300 per person, plus hotel for those who needed (conference was in St. Louis and >50% of our members live within 30 miles). We had just over 300 folks attend, including spouses. We have 2,600 Rotarians in our district.

It's probably not fair to compare costs of holding a meeting in India versus the USA, but it seems obvious to me that cost of the meeting has to be a major factor in keeping people away. Finding ways to lower the costs is critically important. We must break down all the barriers that keep folks away. Cost is one factor. Boring meetings is another. There must be obvious benefits that will draw members to WANT to come to the conference.

I don't have any solutions, but would love to hear examples of other conferences, especially ones with high %-age of Rotarians attending and why folks want to attend.

- Dr. Todd Lindley, PDG

Girish Mittal wrote:

Our DISCON is around \$100 or so...About 1000 people register for DISCON out of around 6000 Rotarians...If the registration is lower, we will have more people attending, but there is no venue available, which can accommodate, say 2000 people..

In any conference around the world, it is generally mixed bag...some outstanding speakers..some plainly boring.. So it is primarily, fellowship, which has to be driver to attend the conference.

Shankar Rangasamy wrote:

In our RID 2980 there are now 6000+ Rotarians; Since there is massive growth in membership we dont know the exact count ; The conference charges 1750. Normally we get lot of sponsors & that way the Conference charges are subsidized; accommodation is not included.

Fellowship & meeting friends is the prime driver for registration; also MG Projects are displayed in conference venues which are a attraction for newly joined Rotarians.

Our district 3780 covers the whole of Quezon City, Philippines. The last time we had our Discon within the confines of our district was in RY 2000-2001 or more than 10 years ago. During the past years our Discon were held either at Subic Bay (3 times), Baguio City (4 times),

*City of Manila (3 times). This RY, it will be held at the Taal Vista Hotel, Tagaytay City. Our club is the host (the DG is from our club) and our registration fees are approx **\$85.00 or Pesos 3,700** (Early bird promo) to \$100 or **Pesos 4,200**. This early we have already sold half of the registration tickets which is quite good considering that our DISCON will be in April 2012. We are preparing for at least 1,000 attendees.*

The fee of course does not include transportation and accommodations.

- Jesse Tanchanco, RC Loyola Heights, RID 3780, Q.C. Phils

I would say that ours would cost about \$1,000 also, if one takes his or her spouse and attends the entire conference.

This year, ours is a cruise, so attending only parts is not really possible.

When the conference is held within the district, some DGs can boast of large numbers because even just attending one session or one meal counts as the person attending the conference.

- Eugene L. Beil, Centennial PDG 6950

Back to my question, why do we need a District Conference? I'm not being overly argumentative but we need to periodically ask these kinds of questions about some of the Rotary institutions. For one thing I wish the RI Bylaws didn't require the annual business meeting take place at the DC. A club or a club's representative should not have to spend so much money just to have their voice heard in district business. A single day meeting within the district would be better attended and there would be time for actually conducting business and addressing issues rather than everything crammed into thirty minutes at the end of the day in a disorganized process to get a rubber stamp of approval from the clubs. It would go a long way towards ending the Us and Them relationship between clubs and the district.

<<<<

- Steve Coleman

PROGRESSION FOR AG

My former district, D 6840, in south Louisiana and Mississippi was one of the 'pilot' programs for AGs. It replaced the "Governor's Aide," at least that is what I think the title was.

I served as AG in 1997-98 and was asked by the next DG to serve in 1998-99. If I recall, there were six of us serving 51 clubs, with each AG having 8 or 9 clubs in his area of responsibility.

We were told that RI wanted to use AGs to reduce the load of the DG in > order to encourage younger DGs and applicants that were not retired. The AG served in a very official capacity and even rated the clubs for the DG. I did not want to rate my own club, so worked with an AG in nearby Mississippi to rate my club and I would rate his. Each of us had 9 clubs so I rated 8 in my area plus his club, and he rated 8 in his area, plus my club.

The DG made the required "official visit" to each club, but he duty as DG was considerably lightened by the AGs. The DGs for the two years I served continued their careers as an ophthalmologist (97-97 and chemical engineer (98-99)

The district adopted a policy that candidates for DG must first serve as AG before standing for Governor. I was asked to stand for DG after my second term as AG, but was chosen a Visiting Professor by TRF (no longer a part of TRF) to the Philippines, and opted to remain here.

>>>>At any rate I am glad that RI adopted the program. As some have pointed out, AGs can effectively reduce some of the time/travel tasks for a District Governor. I do recognize however that customs in some countries want to see "The Governor" and not an AG. Sometimes the AG only acts as a guide/companion/chauffuer/etc. for the DG.

The AG in my present cluster is chosen by the clubs and the name is submitted to the incoming DG for his/her approval. There are 10 clubs in our cluster and they do a monthly joint project that is led by the AG, so it is important that the AG be respected as a leader of all 10 clubs. The system has worked well so far, but we usually have to explain to the incoming DG how the system has been successful - We are presently the only cluster doing it that way at this time.

>>>>In D 3790 (northern Philippines) the district is divided in to 4 geo-graphical areas. Area 1 is most northern Area 4 is most southern. Each Area has 20-30 clubs arranged in 'clusters' and given letter names A, B, C, or D.

- Ron Nethercutt, Past ROTI Chair

Todd Lindley <rotary6060.tl@gmail.com> wrote:

Ron, you're correct that there was a pilot program going on "testing" the AG system. We were running it in D6050 for a few years prior to the Missouri redistricting of July 1, 1999.

And Steve Coleman, you've probably figured out by now that Assistant District Governor is the same as Assistant Governor. So, ADG = AG. We're so lazy in Missouri, we just call them "hey, you!"

And I pretty much agree with what has been written on this subject, both pro & con. We try to find Rotarians willing to serve who also have skills to offer to the clubs and our districts. In some regions we have more qualified folks than we need. In other regions, we cannot find willing volunteers.

We have resorted to recruiting 5-6 PDG's who live down in the general area and have begged them to help support the 8-9 clubs down located down there.

And, just like in business, we find about 20% of the AG's do a fabulous job, about 20% do an adequate job, 20% try pretty well but must have been sleeping during class. They don't truth from myth in Rotary. The other 40% seem to never show up, don't respond to emails, have no idea what they're supposed to be doing and just don't care. "Life is like that."

>>>>One other point that Steven Coleman brought up was the difference in the use of the term "Zone" in Rotary in different parts of the world. Officially, Rotary uses the term Zone to refer to a group of districts joined together, primarily for the purpose of nominating candidates to serve as Directors of Rotary International. In recent years additional purposes of having zones has included added significant multi-day training programs for District Governors Elect and District Governors Nominee (GETS and GNATS).

>>> Yes Ron, I've seen districts that call group of clubs clusters, groups, regions, and areas. It was a bit confusing for me to come across some districts that call groups of clubs 'zones', but as has been brought up - 90% of the Rotarians in those clubs have no clue about official Rotary International Zones and so using the term 'zone' to describe a group of clubs is not abit confusing for them at all.

Here in eastern Missouri we haven't figured out what to call a group of clubs, plus we rearrange the grouping nearly every year! But I'll add "cluster of clubs" sounds good. Rather like a gaggle of geese or pod of whales. Although, I usually think of "cluster of nuts" rather than cluster of clubs. Maybe its the same things.

suresh sunku <sunku_suresh@hotmail.com> wrote:

It is very interesting topic and it is always good to learn how the things are practiced in different regions. In our District AG's came into action in 1999/2000 or 00/01 in place of Governor's Zonal Representative (GZR). This change of name or role has really brought in significant change in participation of people holding the positions. I agree with Todd and others about the percentage of people who participate or rather justify the responsibilities of the position. It is more or less similar every where with few numbers changing here and there. we still continue with the position of Governor's Aide (and I do not know/understand) the responsibilities of this position which I held twice in last three years. It is more like a directory position and nothing more than that.

I enjoyed working as AG in 2007-08 and was able to motivate 6 Clubs in our zone participate in all avenues of service including TRF. Our district has bifurcated into 8 zones each zone consisting of 6 to 12 clubs. The title Cluster may be more appropriate but we prefer term zone as it is more easily understandable to the people in this region where the english is still not up to the mark.

AG not ADG, AG looks after a zone - a grouping or cluster of clubs, he does not look after a District as does the DG. Yes AG is a very important position, a great support for the DG >>>>

- Madhukar Malhotra, Rotary Club of Chandigarh

"Zone's" are looked after by an RI Director. For instance, in my District, 7020, we are in Zone 34. Paired with Zone 33, our RI Director is John Smarge. A zone is a collection of Districts. There are 34 Zones, and each Director has two Zones. Therefore, there are 17 Directors on the RI Board, plus the President and President Elect, making the RI Board 19 members.

AG's look after a group of clubs - usually between 4 and 10. And when it comes down to it, the AG makes of the job whatever he/she wants to! Some attack it with great devotion; some want a badge, an entry on their CV.

Not to sound uppity or snobbish, but it is amazing to me how many discussions of such issues can be resolved by reading the MOP. The AG (ADG is not mentioned per se in the MOP, but many AG's are called ADG's because they do "report" to the DG) is well defined in the MOP. It is NOT a three year term. All the MOP says is that an AG can serve a MAX of three years. And it is a required appointment.

If you ever have trouble sleeping, put the MOP on your nightstand - very informative, very important, but can only be taken in small doses!! Has anyone in ROTI ever read the MOP cover to cover in one sitting?

Happy Holidays! **- PP/PAG Don, RC St. Thomas, District 7020**

If you want to begin the chain with the AGs you find like in any organization there are few positions to move "up into." There is only one leadership position the rest of the way up the chain of command, so there isn't room for everyone to be the leader. That is recognized and I think fairly well accepted. The problem as I see it is in the support positions and that starts at the top. The rules say that there must be 6 or 8, I don't recall the exact number, but I am close, former RI Presidents on the Foundation Board of Trustees. In addition to that they seem content to re-elect themselves and although there might be a break in their time as trustee, they seem to return fairly regularly.

If there is little or no turnover at the top that means at the district and I suppose zone levels too, there is no upward mobility and as a result the pool becomes stagnated.

Example; in my district we have a "new" extension chairman every year or so. Always a PDG. In the 7+ years I have been here they have been responsible for the creation of exactly one club!! The other new club during that time was a direct result of my own efforts because when I moved here I saw a need, cleared it with the DG and got it started. The extension chair had nothing to do with it.

My point is we need to clear out the repeaters at the highest level and move new, highly energized people into those positions. That should stimulate the chain of command and attract people who can make a difference. If the leadership in this district is any example, with a few exceptions, it is basically stagnate and does "enough" to get the just done "adequately."

- Bob Collins, RC of Council Bluffs Centennial D-5650



Robin Chapple

Senior ROTIAN FEATURE of the MONTH

I started my activity in service clubs with membership of Round Table in 1957, and became a Rotarian, at the same time, in 1967. I have twenty one years with 100% attendance. Molly was a member of Inner Wheel also for thirty three years until 2001. She is a past president of her UK club and her recent club in OZ.

I was born in 1930 in Cheshunt in Hertfordshire, UK. This is about 20kms north of London but it is not part of London. My sister Brenda was born in 1934.

I started my education at an 'Endowed' School. It had been built and endowed in 1640 for the education of the poor. During my days the fabric of the building appeared to be the original. We had bare board floors with very raised knots and nails prominent. The teachers were devoted and managed to get me to a standard where I won one of 18 scholarships to one of the new "Grammar Schools". Cheshunt Grammar School was newly built when I joined with only 180 students.

By now World War 2 had started and many teachers had been conscripted for war service and staff included recalled retired teachers and immigrants who had escaped Hitler's extreme activities in Europe. The school corridors were reinforced with heavy timber uprights and overhead planks to provide a safety tunnel. The school windows were protected with internal wire netting to protect the students from flying glass. Public sirens, usually sited with the local police station, would announce an imminent air attack and everyone left the class room and sheltered in the corridor and waited for the same siren to announce "All Clear". Not a relaxed way to learn Latin. We shared the 'blitz' on London, the V1 and V2 bombs and the incessant anti aircraft guns parked in local fields. As a teenager I would hunt for unexploded bombs!

I went into the Sixth form to study pure and applied maths, physics and chemistry. In those days a pass in those subjects gained an "Intermediate BSc" which replaced the first year at university. I planned to go to the Electrical college at Loughborough but my mother argued in favour of a 'safe job' and I finished up with university entry to be a school teacher. Many years later I recounted the story to my sister who had suffered the same logic and actually finished up as a teacher. "Our mother spoiled both of our lives" was her comment. She actually became a teacher.

Molly and I had been at the Grammar School at the same time since age 11. We 'met' on Liverpool Street station on our return journey from working in the City of London. Molly worked in the Bank of England and I worked for the Phoenix Assurance Company working as a foreign fire underwriter for business in Cuba and Peru. My father had hoped that I would finish up working in the insurance industry. I needed to fill the time between college acceptance and call up to the RAF. Immediately after World War 2 we were required to serve as conscripts for two years before attending tertiary education. I was "called up" to the RAF in 1948.

Our quarters were WW2 'Nissen Huts'. Very basic, one coal fired stove in the middle with twenty airmen bedded there. I was allocated a corner bed and spent the rest of my Air Force life there. The hut was closer to the front gate than the Police Guard House. I was issued a permanent pass so I was able to come and go as I pleased. On return from my first leave I rode my bicycle to Paddington Station, put the bike on the train and collected it when we reached Reading and cycled to the camp. That was the permanent habit for the rest of my RAF service. The huts and the offices were about two miles apart and I used my bike to cycle between.

Molly was born in Waltham Abbey in Essex. I knew Molly at school but we did not 'meet' until we were both working. Molly's father was born in Copenhagen Denmark and traveled to the UK in 1912 to extend his study of horticulture and landscaping. He was trapped by the start of the first World War and married Molly's mother in 1921.

On demobilization I joined Molly's dad in his business and Molly and I were married in 1951. In all my busy working life Molly has provided support in the form of running the house and family during my hours of absence and working on the nursery in the packing shed, support in our office and manning the telephone and dealing with 'reps' when they called. Without that support none of this would have been possible.

We grew tomatoes and cucumbers within heated glass structures. We were the first 'nursery', as horticultural businesses of that type were called, to be 100% oil fired. I expanded that business and diversified into electrical contracting, photography, retail electrical, public address and television rental. We employed thirty two people.

I am a qualified radio amateur and was active for 25 years including many years as a controller for RAYNET the amateur radio hams who use their equipment and expertise to assist the emergency organizations.

I retired at age 42, needing only enough to pay the butcher and the baker, and decided to do those things that others saved up for age retirement and often 'pegged out' or were physically unable to complete. I helped an old school friend who was Head of Department and needed an electrical lecturer at his college for two years. Then the company who were previously my major supplier asked me to 'help out'. I finished up as General Sales Manager and took turnover from 1.4M UK pounds to 10M UK pounds in eight years.

We have been around the world five times, one of which was the trip to Australia on a GSE follow up which found me with a job offer which we accepted. We also visited South Africa in 1981 as guests of the Rotary Club of Germiston. We spent five weeks traveling with the Rotary Club and some time with Molly's cousin in Johannesburg.

We were members of a return GSE team to Australia in 1982 and were hosted by four Rotarians in different parts of Victoria. Our experiences during this trip convinced us to make Australia home.

I started my activity in service clubs with membership of Round Table in 1957, and became a Rotarian, at the same time, in 1967. I have twenty one years with 100% attendance. Molly was a member of Inner Wheel also for thirty three years until 2001. She is a past president of her UK club and her recent club in OZ.

I launched the first website for District 9790 in 1996 and have not yet managed to lose the job. We now include a complex database system for membership, history and statistics together with on line forms and an internal WebAdmin email system with 250 addresses.

I have been fully retired since 1995 and we have spent some of that time on caravan trips around our great country. The most recent trip was 15,000 kms and took fourteen weeks.

I am a member of three Rotary Fellowships: a founder member and past Director of Rotarians on the Internet, ROTI, and a past director of the International Computer user Fellowship of Rotarians, ICUFR.

We have two sons, of whom we are very proud, one Rotary adopted daughter, seven grandchildren and two "adopted" grandchildren. Our sons have joined us in OZ and one is a member of the Rotary Club of Eltham and the other a past member of my own club but resigned due to business and family demands.

We are both keenly interested in the study of our family tree and my obsession with computers and the free time presented by retirement has allowed us to pursue this venture. We have been fortunate enough to trace Molly's Danish forebears to a time before the Napoleonic wars and some of her English ancestors back to 1140. She has Sir John Perient in the line and her friends at her keep fit class bought her a tiara to wear!! I have to bow to her before I enter the room!! This is an all engrossing hobby and takes hours of my time.

District 9790 has two thousand Rotarians in sixty clubs covering an area of Victoria which represents the virtual North West corner of the state. It is a ten hour car journey from one remote corner to the other. Our DG in 1995 drove 40,000 kms on Rotary business. My original club was in the then District 113, London, and we were the largest district in the world with 108 clubs. The area being only 25 miles by 40 miles wide.

Victoria is 3% of the Australian land mass, has about 25% of the population and 55% of the manufacturing output. Melbourne supplied Royce Abbey the RI President in 1987 and Glen Kinross, our RI President for 1997 - 1998, was also an Australian.

I joined Round table in 1957 and was Chairman in 1970. I served on the District Council for three years.

I joined Rotary in 1967 and I have held all of the service chairmanships, secretary, treasurer, and I was President for the advent of the new millennium. My major community service achievement was the establishment of an Abbeyfield Society in our area and service on the Regional Council as Chairman and was a member of the National Executive. The local societies purchase ordinary homes in ordinary streets and provided accommodation for lonely old folk. They had a room of their own, with their own key, where they prepared their own breakfast and were provided with a mid-day and evening meal in a dining area with other residents. This was provided to old folk without private means. Once this project was launched it was self funding and is still running and growing.

I also was the founder technical director of the local talking newspaper for the blind. I designed and built a recording studio and every second week arranged for 'readers' to record items from the local newspaper in order to keep the sight handicapped in touch with their community. Molly and I would then make eighty copies of the tapes and the Rotary Club would deliver them at the weekend.

I have been the secretary of an extension committee twice. Once in England my club, the Rotary Club of Cheshunt and Waltham Cross started the Rotary Club of Waltham Abbey and ten years ago The Rotary Club of Eltham started the Rotary Club of Diamond Creek. I was the Charter secretary as well.

I have served as the Chairman of my local political party, Chairman of the Chamber of Commerce, President of the Carnival Association and treasurer of the Old Peoples Welfare committee.

In District 113, as it then was, my club used to host a coach load of overseas students, from the University of London, over a weekend. They would stay with a family and see English family life, be taken to see 'ordinary' things around the district, our district not the Rotary District, and would be jointly entertained to an English 'garden party' tea before rejoining the coach to be taken back to the University.

Inevitably in some cases long term associations resulted from this meeting. One particular lass was 'paired' for several years with another Rotarian from the Club. After Molly and I emigrated and returned to London for a visit we were invited to dinner with the Rotarian to speak to this Colombian lass (Patty) who wanted to learn about Australia as it was one of the options for the future for herself and her future husband (Djema) who was a Turkish Cypriot.

We spent the evening talking about Australia and our perspective of our chosen country. In spite of that they got married and emigrated and 'adopted' us. They stayed in our home for the first several weeks, rented a home close by for a few months and bought their first home just up the road from us. Once they were in settled employment they built themselves a new home closer to Djema's employment.

We emigrated to Australia in 1983 and settled in Doncaster, a northeastern suburb of Melbourne, "The most Livable Capital City in the World". I had been offered a job as Sales and Marketing manager of an electrical wholesaler because of my involvement and experience with the first ever stock keeping system run by my UK employer. The company was taken over and they made all State Marketing managers redundant. A bad investment in the 80s left us without major funds.

After a few months I joined the largest Australian electronics company, Amalgamated Wireless Australia, AWA, designing, and specifying two-way radio systems, based mostly on my knowledge and familiarity with amateur radio. I became national sales and Marketing Manager for ICOM and later moved to being Sales Manager for a company specializing in adding intelligence to basic two-way radio systems.

I started with the personal computer in 1988 and have used the modem for various functions since then. I wrote a stock keeping, workshop and accounting integrated program for the company as a result of them paying for my training. That was written in Paradox. I have been a member of the Melbourne PC User Group since 1988 and was a member of their Internet Help Team for three years where we assisted our 14,000 members with their problems.

Since retirement I have been 'up to my neck' in Rotary. I launched the first District web page in 1996 and have been District Webmaster continuously ever since. We have about twenty seven sites and nearly two thousand pages. This included five sites for RI President Frank Devlyn. I have been club bulletin editor for nine, not continuous, years. In Australia most clubs have a weekly bulletin which certainly was not the case in UK before we left. I produce hard cover club directories, manual for Youth Service, Constitution and Bye Laws, Club History and so on.

My interest in amateur radio started during WW2 when I purchased surplus army and RAF equipment. I was very active on VHF and UHF until I joined AWA in Australia and designed two way radio systems for major corporate companies and government departments. Living north of London spent twelve years as the leader of RAYNET in our area. My major interest was low power systems. QRP in ham talk. The major achievement was a 600mw transmission to Switzerland. Amateur radio was given up when I worked in two way radio. I had three radios operational in my company car and that was enough.

Since retirement I have been 'up to my neck' in Rotary. I launched the first District web page in 1996 and have been District Webmaster continuously ever since. We have about twenty seven sites and nearly two thousand pages. This included five sites for RI President Frank Devlyn.

...after all that Christmas food

CHOOSE YOUR LOW-CHOLESTEROL HEART-HEALTHY DIET

To get the nutrients you need, you have to eat a variety of foods, from the different food groups. After determining your dietary goals with your doctor, adjust the number and size of portions to reach and stay at your healthy body weight.

THE FOOD PYRAMIND

VARIETY IS THE SPICE OF LIFE
AND THE KEY TO GOOD
NUTRITION.

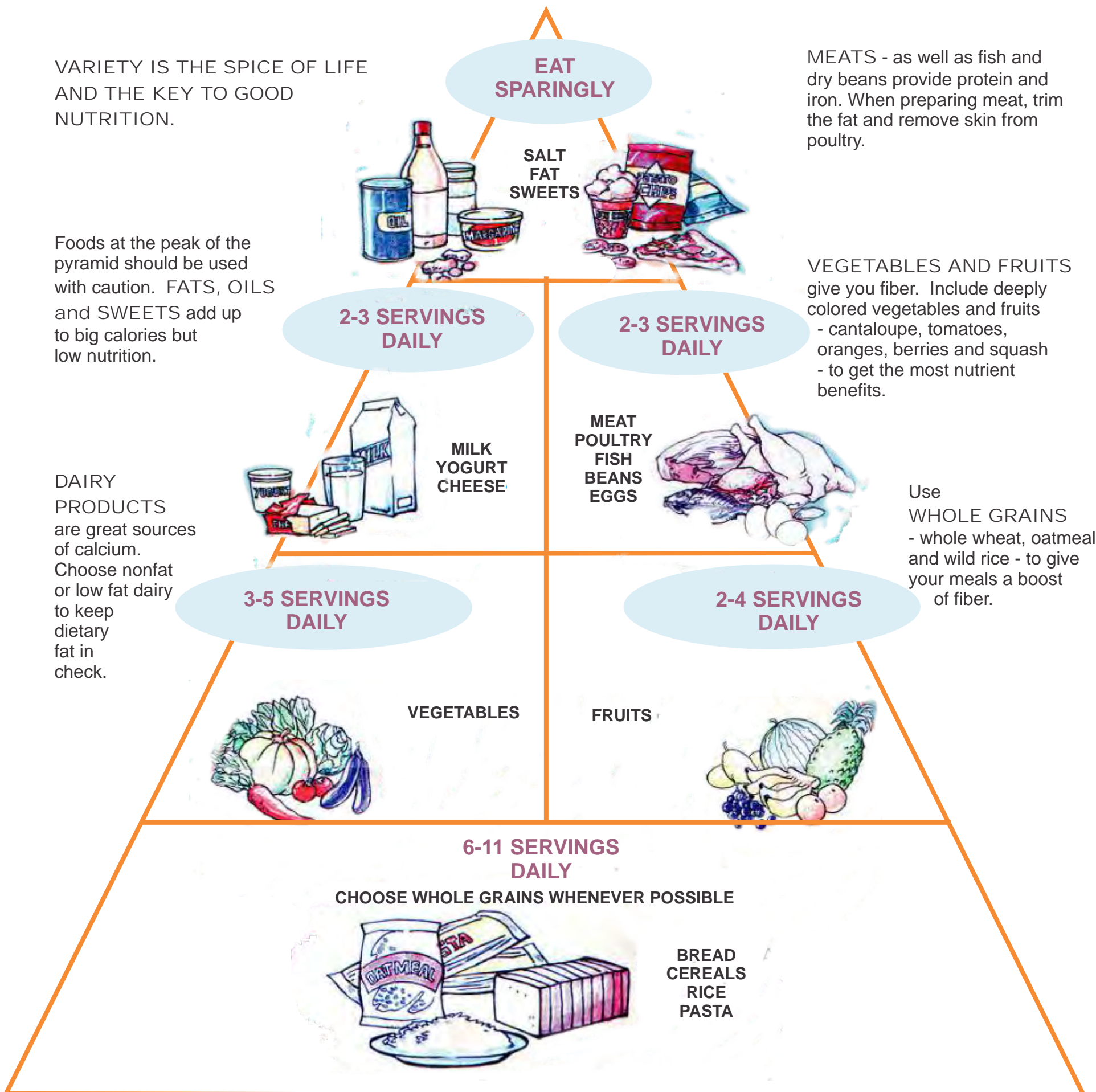
Foods at the peak of the pyramid should be used with caution. FATS, OILS and SWEETS add up to big calories but low nutrition.

DAIRY PRODUCTS are great sources of calcium. Choose nonfat or low fat dairy to keep dietary fat in check.

MEATS - as well as fish and dry beans provide protein and iron. When preparing meat, trim the fat and remove skin from poultry.

VEGETABLES AND FRUITS give you fiber. Include deeply colored vegetables and fruits - cantaloupe, tomatoes, oranges, berries and squash - to get the most nutrient benefits.

Use WHOLE GRAINS - whole wheat, oatmeal and wild rice - to give your meals a boost of fiber.

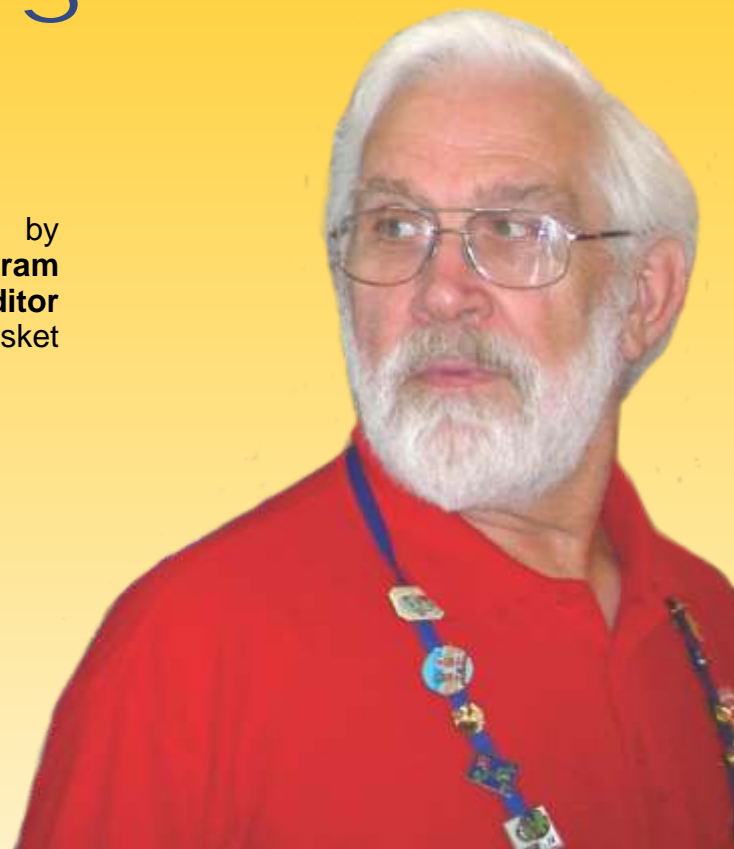


REFERENCE: PHC ALIVE DIET. DIVISION OF NUTRITION AND DIETETICS. PHILIPPINE HEART CENTER

Diet and exercise will help, but sometimes these are not enough to achieve your cholesterol goal. In addition to diet and exercise, ask your doctor about medication therapy. By working with your healthcare professional to develop an overall cholesterol reduction plan, you can reach your target.

MEMBERS REPORTS

by
Lawrence Tristram
Assistant Editor
Breadbasket



lawrence@tristram.force9.co.uk

DISTRICT 6460

Galesburg, Illinois

Nov/Dec 2011

Building readers

Reading is Fundamental (RIF) provides free books

The Reading is Fundamental (RIF) program provides free books to children in all District #205 K-8 schools. This is the 32nd year for the program in Galesburg area public schools.

The program's primary sponsor, the Galesburg Rotary Club, has helped fund the program for 32 years. Up until this year the rest of the funding had come from the federal RIF program. Elimination of those funds in the federal budget resulted in a 75% funding cut for the local program. With that kind of a deficit, local officials are looking to replace the funding for this important program.

Three times per year, children in Galesburg District #205, elementary and middle schools are given the opportunity to select a brand-new book which they are allowed to keep. The books are selected by librarians and represent a wide variety of interests. From fiction to non-fiction, from drama to sports, students have the opportunity to find books they will love and treasure.

The Rotary Club provides more than \$5,000 annually to give the students the books. Money is raised through the Rotary's Travelogue program. The program serves about 3,000 District #205 elementary and middle-schoolers.

"We value literacy very highly," said District #205 Assistant Superintendent for Curriculum and Instruction Joel Estes. "To



"To have a group like the Rotary provide this level of funding...points out that the Galesburg community cares very deeply about its schools..."

have a group like the Rotary provide this level of funding...points out that the Galesburg community cares very deeply about its schools and cares very deeply about the literacy of the children in its schools." Estes added that, during the years in which the RIF program has been offered in all elementary and middle

schools, a student who attended District #205 schools from kindergarten through eighth grade would have the opportunity to receive 27 free books.

Through the years, the Galesburg Rotary Club has invested \$241,100 in the RIF program and helped hand out nearly 500,000 books! If par-

ents are aware of any individuals or organizations that would like to help support the program, they should contact the Rotary Club RIF Task Force advisors, Lee Farrar @ 343-4741 or Louise Wolfe @ 289-6435.

Please ask your child to share his/her RIF book with you.



Rotary Club of Ottapalam Helping Disabled People

By Ambalakat Ram Mohan

After the successful implementation of our Clubs CBR Project we have applied for a Matching Grant to provide braille, canes and wheelchairs to 743 identified disabled persons in different category with the support of the Rotary Club of Bander Sunway, Malaysia Dist 3300.

This was readily approved by the Rotary Foundation and a sum of 20,111US\$ was released.

The phase one implementation programme was carried out last month and here are a few photographs of the function held.



This became an eye opener to many. People have started sending money, enriching the Foundation work.

The phase 2 programme is scheduled for the International Day for The Disabled on 3rd Dec and PDG Rtn MPH Sunil Zacharia has kindly consented to be the chief guest.

The Mountains of the Moon

<http://www.mountainsofthemoon.org/>
- John Glassford -



The Glaciers

This is where we will be on World AIDS DAY December 1st 2011. This is not a picnic trek and it will be tough, not only do we have to worry about the mud and the constant rain we also have to look out for the altitude. The following story gives a good idea of what this trek/climb is all about. Some say it is like trekking the Kokoda Track with the altitude of Kilimanjaro. We climbed Kilimanjaro in 2007 for the AIDS orphans of Africa.

This story by Cam McLeay

I pulled my sleeping bag over my head and tightened the drawstring around my face. I have been living in Uganda for over 3-years and couldn't remember the last time I had actually climbed into my sleeping bag, let alone pulled the hood over my head – we live on the equator and we are not used to feeling that cold.

The next thing I knew it was morning and light crept through the window of the Guy Yeoman hut. I ventured outside and mist swirled around in the valley below. A brisk wind dispelled any ideas I had of an early morning swim. Smoke poured from beneath the roof of the porters huts – a good sign that the fire was warm and the day had begun. Putting on the porridge seemed as good a start as any but not before that first cup of tea. On my way to the creek to fill the teapot a mostly grey streaked between the giant heather and I was able to make out clearly at the end of the streak a Ruwenzori Turaco. Even while half awake, I knew that this would cause your most enthusiastic twitcher to wet his pants with excitement. I stood still to watch this remarkable bird preen himself only meter's away and reveled in the again in the magic of the Rwenzori and mystery that still surrounds the Mountains of the Moon.

MINUTES of ROTI LEADERSHIP COUNCIL @RotiLdr1113

The season being busy for every one concerned, the only discussion in RotiLdr1113 was a concern on developing a system that will provide an access to ROTI membership desiring to retrieve data, particularly old write-ups and history records of ROTI.

Mark Howison and Chip Ross are working on the solution.

Prepared by
G. A. Nethercutt
ROTI Secretary

Twas the night before Christmas and all through the nets
Not a mousie was stirring, not even the pets.
The floppies were stacked by the modem with care
In hopes that St. Nicholas soon would be there.
The files were nestled all snug in a folder
The screen saver turned on, the weather was colder.

And leaving the keyboard along with my mouse
I turned from the screen to the rest of the house.
When up from the drive there arose such a clatter
I turned to the screen to see what was the matter.
Away to the mouse I flew like a flash,
Zoomed open a window in fear of a crash...

The glow from the screen on the keyboard below
Gave an electronic luster to all my macros.
When what to my wondering eyes should appear
But a little sleigh icon with eight tiny reindeer
And a tiny disk driver so SCSI and quick
I knew in a nano it must be Saint Nick.

More rapid than trackballs his cursors they came,
He whistled and shouted and FAXed them by name.
"Now Flasher! Now Dasher! Now Raster and Bixel!
On Phosphor! On Photon! On Baudrate and Pixel!
To the top of the stack. To the top of the heap."
Then each little reindeer made a soft beep.

As data that before the wild electrons fly,
When they meet with a node, mount to the drive,
So up to the screentop the cursors they flew
With a sleigh full of disks and databits, too.
And then in a twinkling I heard the high whine
Of a modem connecting at a baud rate so fine.

As I gazed at the screen with a puzzling frown
St. Nicholas logged on though I thought I was down.
He was dressed all in bytes from header to footer
And the words on the screen said "Don't you reboot 'er."
A bundle of bits he had flung on his back
And he looked like a programmer starting his hack.

His eyes how they glazed, his hair was so scary,
His cola was Jolt, not flavored with cherry.
His droll little mouth was drawn up like a GIF
And the pixels of his beard sure gave me a lift.
The stump of a routine he held tight in his code
And I knew he had made it past the last node.

He spoke not a word but looked right at me
And I saw in a flash his file was `(.dot)SEA`.
He self-decompressed and I watched him unfold,
Into a jolly old elf, a sight to behold.
And the whispering sound of my hard drive's head
Soon gave me to know I had nothing to dread.

He went straight to his work without saying a word
And filled all the folders of this happy nerd.
And 'tis the whole truth, as the story is told,
That giving a nod up the window he scrolled,
He sprang to the serial port as if truly on fire
And away they all flew down the thin copper wire.

But I heard him exclaim as he scrolled out of sight
"Happy Christmas to All, and to all a good night."

T'was the Net Before Christmas

*by Jim Trudeau & Jay Trudeau (1991)
With apologies to Clement C. Moore*

